

LDLRAD1 Antibody

Catalog No: #34763



Package Size: #34763-1 50ul #34763-2 100ul

Orders: order@signalwayantibody.com
Support: tech@signalwayantibody.com

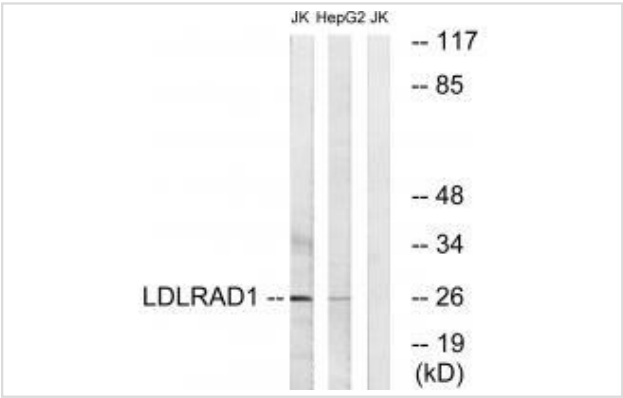
Description

Product Name	LDLRAD1 Antibody
Host Species	Rabbit
Clonality	Polyclonal
Purification	The antibody was affinity-purified from rabbit antiserum by affinity-chromatography using epitope-specific immunogen.
Applications	WB
Species Reactivity	Hu
Specificity	The antibody detects endogenous levels of total LDLRAD1 protein.
Immunogen Type	Peptide
Immunogen Description	Synthesized peptide derived from internal of human LDLRAD1.
Target Name	LDLRAD1
Other Names	Low-density lipoprotein receptor class A domain-containing protein 1; LDLRAD1;
Accession No.	Swiss-Prot: Q5T700NCBI Gene ID: 388633
Uniprot	Q5T700
GeneID	388633;
SDS-PAGE MW	26kd
Concentration	1.0mg/ml
Formulation	Rabbit IgG in phosphate buffered saline (without Mg2+ and Ca2+), pH 7.4, 150mM NaCl, 0.02% sodium azide and 50% glycerol.
Storage	Store at -20°C

Application Details

Western blotting: 1:500~1:3000

Images



Western blot analysis of extracts from Jurkat cells and HepG2 cells, using LDLRAD1 antibody #34763.

Background

Belongs to the LDLR family. 3 isoforms of the human protein are produced by alternative splicing.

Gregory S.G., Nature 441:315-321(2006).

The MGC Project Team; Genome Res. 14:2121-2127(2004).

Note: This product is for in vitro research use only