

## LFA3 Antibody

Catalog No: #34770

Package Size: #34770-1 50ul #34770-2 100ul

Orders: [order@signalwayantibody.com](mailto:order@signalwayantibody.com)Support: [tech@signalwayantibody.com](mailto:tech@signalwayantibody.com)

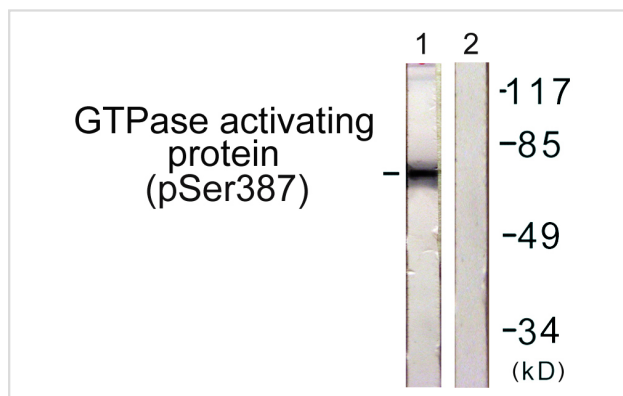
## Description

Product Name	LFA3 Antibody
Host Species	Rabbit
Clonality	Polyclonal
Purification	The antibody was affinity-purified from rabbit antiserum by affinity-chromatography using epitope-specific immunogen.
Applications	WB
Species Reactivity	Hu
Specificity	The antibody detects endogenous levels of total LFA3 protein.
Immunogen Type	Peptide
Immunogen Description	Synthesized peptide derived from internal of human LFA3.
Target Name	LFA3
Other Names	Lymphocyte function-associated antigen 3; Ag3; Surface glycoprotein LFA-3; CD58 antigen;
Accession No.	Swiss-Prot: P19256NCBI Gene ID: 965
Uniprot	P19256
GeneID	965;
SDS-PAGE MW	28kd
Concentration	1.0mg/ml
Formulation	Rabbit IgG in phosphate buffered saline (without Mg <sup>2+</sup> and Ca <sup>2+</sup> ), pH 7.4, 150mM NaCl, 0.02% sodium azide and 50% glycerol.
Storage	Store at -20°C

## Application Details

Western blotting: 1:500~1:3000

## Images



Western blot analysis of lysates from COS7 cells, using GTPase Activating Protein (Phospho-Ser387) Antibody. The lane on the right is blocked with the phospho peptide.

## Background

---

Ligand of the T-lymphocyte CD2 glycoprotein. This interaction is important in mediating thymocyte interactions with thymic epithelial cells, antigen-independent and -dependent interactions of T-lymphocytes with target cells and antigen-presenting cells and the T-lymphocyte rosetting with erythrocytes. In addition, the LFA-3/CD2 interaction may prime response by both the CD2+ and LFA-3+ cells.

Wallner B.P., J. Exp. Med. 166:923-932(1987).

Wallich R., J. Immunol. 160:2862-2871(1998).

Ota T., Nat. Genet. 36:40-45(2004).

---

Note: This product is for in vitro research use only