

MASP2 Antibody

Catalog No: #34775

Package Size: #34775-1 50ul #34775-2 100ul

Orders: order@signalwayantibody.comSupport: tech@signalwayantibody.com

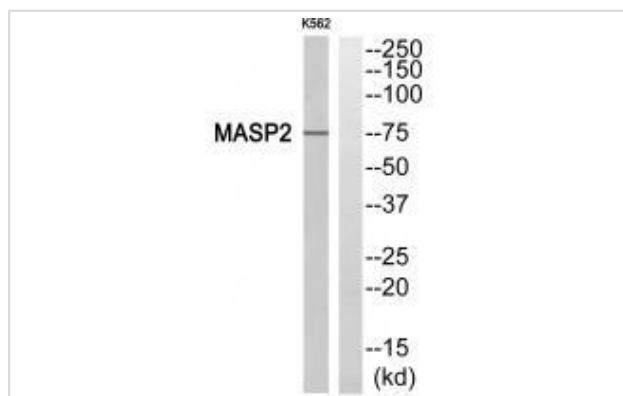
Description

Product Name	MASP2 Antibody
Host Species	Rabbit
Clonality	Polyclonal
Purification	The antibody was affinity-purified from rabbit antiserum by affinity-chromatography using epitope-specific immunogen.
Applications	WB
Species Reactivity	Hu
Specificity	The antibody detects endogenous levels of total MASP2 protein.
Immunogen Type	Peptide
Immunogen Description	Synthesized peptide derived from internal of human MASP2.
Target Name	MASP2
Other Names	Mannan-binding lectin serine protease 2; Mannose-binding protein-associated serine protease 2; MASP-2; MBL-associated serine protease 2;
Accession No.	Swiss-Prot: O00187NCBI Gene ID: 10747
Uniprot	O00187
GeneID	10747;
SDS-PAGE MW	75kd
Concentration	1.0mg/ml
Formulation	Rabbit IgG in phosphate buffered saline (without Mg ²⁺ and Ca ²⁺), pH 7.4, 150mM NaCl, 0.02% sodium azide and 50% glycerol.
Storage	Store at -20°C

Application Details

Western blotting: 1:500~1:3000

Images



Western blot analysis of extracts from K562 cell, using MASP2 antibody #34775.

Background

Serum protease that plays an important role in the activation of the complement system via mannose-binding lectin. After activation by auto-catalytic cleavage it cleaves C2 and C4, leading to their activation and to the formation of C3 convertase.

Thiel S., Nature 386:506-510(1997).

Takahashi M., Int. Immunol. 11:859-863(1999).

Stover C.M., J. Immunol. 162:3481-3490(1999).

Note: This product is for in vitro research use only