

MBL2 Antibody

Catalog No: #34776

Package Size: #34776-1 50ul #34776-2 100ul

Orders: order@signalwayantibody.com

Support: tech@signalwayantibody.com

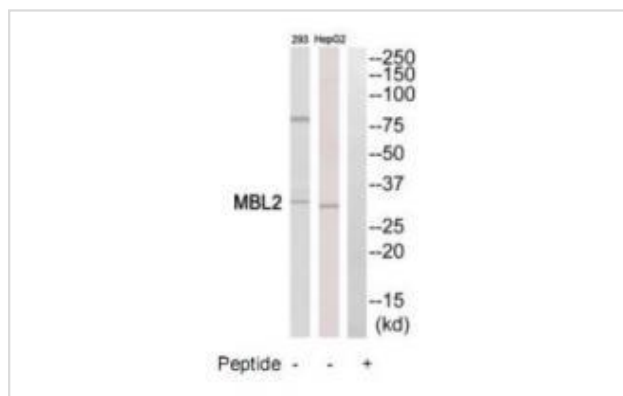
Description

Product Name	MBL2 Antibody
Host Species	Rabbit
Clonality	Polyclonal
Purification	The antibody was affinity-purified from rabbit antiserum by affinity-chromatography using epitope-specific immunogen.
Applications	WB
Species Reactivity	Hu
Specificity	The antibody detects endogenous levels of total MBL2 protein.
Immunogen Type	Peptide
Immunogen Description	Synthesized peptide derived from internal of human MBL2.
Target Name	MBL2
Other Names	Mannose-binding protein C; MBP-C; MBP1; Mannan-binding protein; Mannose-binding lectin
Accession No.	Swiss-Prot: P11226NCBI Gene ID: 4153
Uniprot	P11226
GeneID	4153;
SDS-PAGE MW	27kd
Concentration	1.0mg/ml
Formulation	Rabbit IgG in phosphate buffered saline (without Mg ²⁺ and Ca ²⁺), pH 7.4, 150mM NaCl, 0.02% sodium azide and 50% glycerol.
Storage	Store at -20°C

Application Details

Western blotting: 1:500~1:3000

Images



Western blot analysis of extracts from HepG2 cells and 293 cells, using MBL2 antibody #34776.

Background

Calcium-dependent lectin involved in innate immune defense. Binds mannose, fucose and N-acetylglucosamine on different microorganisms and activates the lectin complement pathway. Binds to late apoptotic cells, as well as to apoptotic blebs and to necrotic cells, but not to early apoptotic cells, facilitating their uptake by macrophages. May bind DNA.

Ezekowitz R.A.B., J. Exp. Med. 167:1034-1046(1988).

Sastry K., J. Exp. Med. 170:1175-1189(1989).

Taylor M.E., Biochem. J. 262:763-771(1989).

Note: This product is for in vitro research use only