

## REC8 Antibody

Catalog No: #34779

Package Size: #34779-1 50ul #34779-2 100ul

Orders: [order@signalwayantibody.com](mailto:order@signalwayantibody.com)Support: [tech@signalwayantibody.com](mailto:tech@signalwayantibody.com)

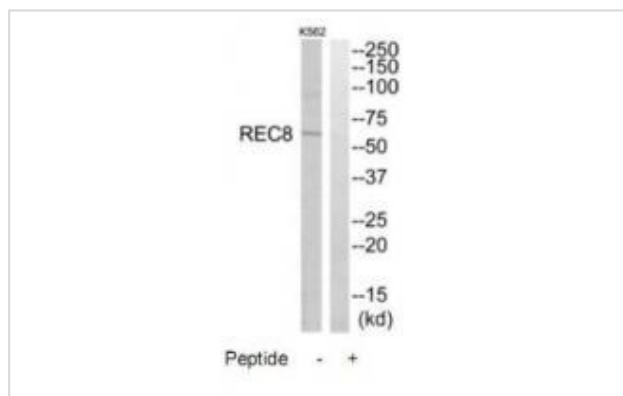
## Description

Product Name	REC8 Antibody
Host Species	Rabbit
Clonality	Polyclonal
Purification	The antibody was affinity-purified from rabbit antiserum by affinity-chromatography using epitope-specific immunogen.
Applications	WB
Species Reactivity	Hu
Specificity	The antibody detects endogenous levels of total REC8 protein.
Immunogen Type	Peptide
Immunogen Description	Synthesized peptide derived from internal of human REC8.
Target Name	REC8
Other Names	Meiotic recombination protein REC8 homolog; Cohesin Rec8p; REC8; REC8L1;
Accession No.	Swiss-Prot: O95072NCBI Gene ID: 9985
Uniprot	O95072
GeneID	9985;
SDS-PAGE MW	62kd
Concentration	1.0mg/ml
Formulation	Rabbit IgG in phosphate buffered saline (without Mg <sup>2+</sup> and Ca <sup>2+</sup> ), pH 7.4, 150mM NaCl, 0.02% sodium azide and 50% glycerol.
Storage	Store at -20°C

## Application Details

Western blotting: 1:500~1:3000

## Images



Western blot analysis of extracts from K562 cells, using REC8 antibody #34779.

## Background

---

Required during meiosis for separation of sister chromatids and homologous chromosomes. Proteolytic cleavage of REC8 on chromosome arms by separin during anaphase I allows for homologous chromosome separation in meiosis I and cleavage of REC8 on centromeres during anaphase II allows for sister chromatid separation in meiosis II By similarity.

Parisi S., Mol. Cell. Biol. 19:3515-3528(1999).

Ota T., Nat. Genet. 36:40-45(2004).

Ebert L., Submitted (JUN-2004) to the EMBL/GenBank/DDBJ databases.

---

Note: This product is for in vitro research use only