

C-Fos Antibody

Catalog No: #21667

Package Size: #21667-1 50ul #21667-2 100ul

Orders: order@signalwayantibody.comSupport: tech@signalwayantibody.com

Description

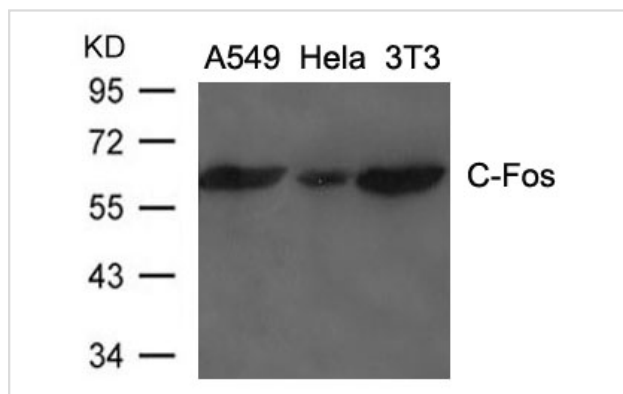
Product Name	C-Fos Antibody
Host Species	Rabbit
Clonality	Polyclonal
Purification	Antibodies were produced by immunizing rabbits with synthetic peptide and KLH conjugates. Antibodies were purified by affinity-chromatography using epitope-specific peptide.
Applications	WB
Species Reactivity	Hu Ms Rt
Specificity	The antibody detects endogenous level of total C-Fos protein.
Immunogen Type	Peptide-KLH
Immunogen Description	Peptide sequence around aa.28~32(S-Y-Y-H-S) derived from Human C-Fos.
Target Name	C-Fos
Other Names	p55; AP-1;
Accession No.	Swiss-Prot: P01100NCBI Protein: NP_005243.1
Uniprot	P01100
GeneID	2353;
Concentration	1.0mg/ml
Formulation	Supplied at 1.0mg/mL in phosphate buffered saline (without Mg ²⁺ and Ca ²⁺), pH 7.4, 150mM NaCl, 0.02% sodium azide and 50% glycerol.
Storage	Store at -20°C for long term preservation (recommended). Store at 4°C for short term use.

Application Details

Predicted MW: 62kd

Western blotting: 1:500~1:1000

Images



Western blot analysis of extracts from A549, HeLa and 3T3 cells using C-Fos Antibody #21667.

Background

Nuclear phosphoprotein which forms a tight but non-covalently linked complex with the JUN/AP-1 transcription factor. In the heterodimer, FOS and JUN/AP-1 basic regions each seems to interact with symmetrical DNA half sites. On TGF-beta activation, forms a multimeric SMAD3/SMAD4/JUN/FOS complex at the AP1/SMAD-binding site to regulate TGF-beta-mediated signaling. Has a critical function in regulating the development of cells destined to form and maintain the skeleton. It is thought to have an important role in signal transduction, cell proliferation and differentiation.

Okazaki K., Sagata N. EMBO J. 14:5048-5059(1995)

Zhang Y., Feng X.H., Derynck R. Nature 394:909-913(1998)

Bossis G., Malnou C.E., Farras R. Mol. Cell. Biol. 25:6964-6979(2005)

Note: This product is for in vitro research use only