

MLF1 Antibody

Catalog No: #34814

Package Size: #34814-1 50ul #34814-2 100ul

Orders: order@signalwayantibody.comSupport: tech@signalwayantibody.com

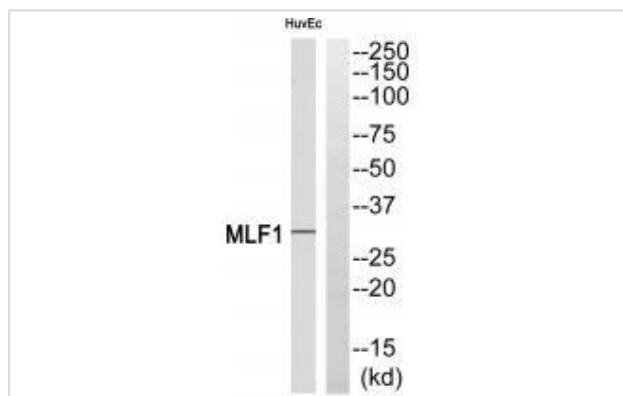
Description

Product Name	MLF1 Antibody
Host Species	Rabbit
Clonality	Polyclonal
Purification	The antibody was affinity-purified from rabbit antiserum by affinity-chromatography using epitope-specific immunogen.
Applications	WB
Species Reactivity	Hu Ms
Specificity	The antibody detects endogenous levels of total MLF1 protein.
Immunogen Type	Peptide
Immunogen Description	Synthesized peptide derived from internal of human MLF1.
Target Name	MLF1
Other Names	Myeloid leukemia factor 1; Myelodysplasia-myeloid leukemia factor 1;
Accession No.	Swiss-Prot: P58340NCBI Gene ID: 4291
Uniprot	P58340
GeneID	4291;
SDS-PAGE MW	30kd
Concentration	1.0mg/ml
Formulation	Rabbit IgG in phosphate buffered saline (without Mg ²⁺ and Ca ²⁺), pH 7.4, 150mM NaCl, 0.02% sodium azide and 50% glycerol.
Storage	Store at -20°C

Application Details

Western blotting: 1:500~1:3000

Images



Western blot analysis of extracts from HUVEC cells, using MLF1 antibody #34814.

Background

Involved in lineage commitment of primary hemopoietic progenitors by restricting erythroid formation and enhancing myeloid formation. Interferes with erythropoietin-induced erythroid terminal differentiation by preventing cells from exiting the cell cycle through suppression of CDKN1B/p27Kip1 levels. Suppresses RFW2/COP1 activity via CSN3 which activates p53 and induces cell cycle arrest. Binds DNA and affects the expression of a number of genes so may function as a transcription factor in the nucleus.

Yoneda-Kato N., *Oncogene* 12:265-275(1996) [PubMed: 8570204].

Hanissian S.H., *Oncogene* 23:3700-3707(2004) [PubMed: 15116101].

Yoneda-Kato N., *EMBO J.* 24:1739-1749(2005) [PubMed: 15861129].

Note: This product is for in vitro research use only