

MYBPC1 Antibody

Catalog No: #34821

Package Size: #34821-1 50ul #34821-2 100ul

Orders: order@signalwayantibody.comSupport: tech@signalwayantibody.com

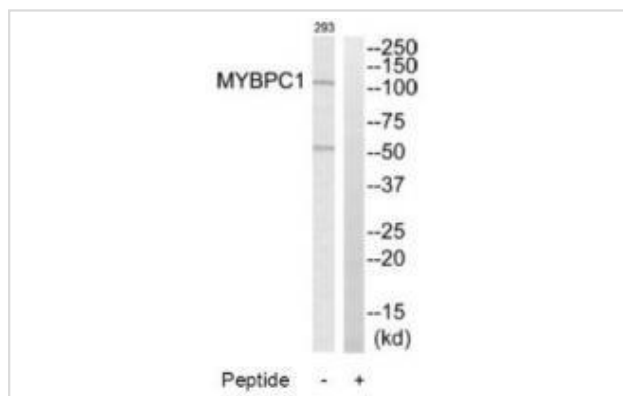
Description

Product Name	MYBPC1 Antibody
Host Species	Rabbit
Clonality	Polyclonal
Purification	The antibody was affinity-purified from rabbit antiserum by affinity-chromatography using epitope-specific immunogen.
Applications	WB
Species Reactivity	Hu
Specificity	The antibody detects endogenous levels of total MYBPC1 protein.
Immunogen Type	Peptide
Immunogen Description	Synthesized peptide derived from internal of human MYBPC1.
Target Name	MYBPC1
Other Names	Myosin-binding protein C slow-type; Slow MyBP-C; C-protein skeletal muscle slow isoform;
Accession No.	Swiss-Prot: Q00872NCBI Gene ID: 4604
Uniprot	Q00872
GeneID	4604;
SDS-PAGE MW	120kd
Concentration	1.0mg/ml
Formulation	Rabbit IgG in phosphate buffered saline (without Mg ²⁺ and Ca ²⁺), pH 7.4, 150mM NaCl, 0.02% sodium azide and 50% glycerol.
Storage	Store at -20°C

Application Details

Western blotting: 1:500~1:3000

Images



Western blot analysis of extracts from 293 cells, using MYBPC1 antibody #34821.

Background

Thick filament-associated protein located in the crossbridge region of vertebrate striated muscle a bands. In vitro it binds MHC, F-actin and native thin filaments, and modifies the activity of actin-activated myosin ATPase. It may modulate muscle contraction or may play a more structural role.

Fuerst D.O., J. Cell Sci. 102:769-778(1992).

Weber F.E., Eur. J. Biochem. 216:661-669(1993).

Bechtel S., BMC Genomics 8:399-399(2007).

Note: This product is for in vitro research use only