

NDUFA4 Antibody

Catalog No: #34827

Package Size: #34827-1 50ul #34827-2 100ul

Orders: order@signalwayantibody.comSupport: tech@signalwayantibody.com

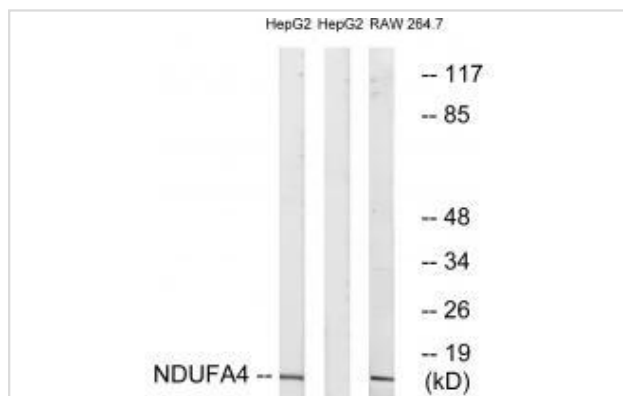
Description

Product Name	NDUFA4 Antibody
Host Species	Rabbit
Clonality	Polyclonal
Purification	The antibody was affinity-purified from rabbit antiserum by affinity-chromatography using epitope-specific immunogen.
Applications	WB
Species Reactivity	Hu Ms
Specificity	The antibody detects endogenous levels of total NDUFA4 protein.
Immunogen Type	Peptide
Immunogen Description	Synthesized peptide derived from internal of human NDUFA4.
Target Name	NDUFA4
Other Names	CI-MLRQ; complex I-MLRQ; EC 1.6.5.3; EC 1.6.99.3; MLRQ
Accession No.	Swiss-Prot: O00483NCBI Gene ID: 4697
Uniprot	O00483
GeneID	4697;
SDS-PAGE MW	9kd
Concentration	1.0mg/ml
Formulation	Rabbit IgG in phosphate buffered saline (without Mg ²⁺ and Ca ²⁺), pH 7.4, 150mM NaCl, 0.02% sodium azide and 50% glycerol.
Storage	Store at -20°C

Application Details

Western blotting: 1:500~1:3000

Images



Western blot analysis of extracts from HepG2 cells and RAW264.7 cells, using NDUFA4 antibody #34827.

Background

Accessory subunit of the mitochondrial membrane respiratory chain NADH dehydrogenase (Complex I), that is believed to be not involved in catalysis. Complex I functions in the transfer of electrons from NADH to the respiratory chain. The immediate electron acceptor for the enzyme is believed to be ubiquinone.

Kim J.W., Biochem. Mol. Biol. Int. 43:669-675(1997).

Kanagarajah D., Submitted (NOV-1999) to the EMBL/GenBank/DDBJ databases.

Ebert L., Submitted (MAY-2004) to the EMBL/GenBank/DDBJ databases.

Note: This product is for in vitro research use only