

NDUFB9 Antibody

Catalog No: #34832

Package Size: #34832-1 50ul #34832-2 100ul

Orders: order@signalwayantibody.comSupport: tech@signalwayantibody.com

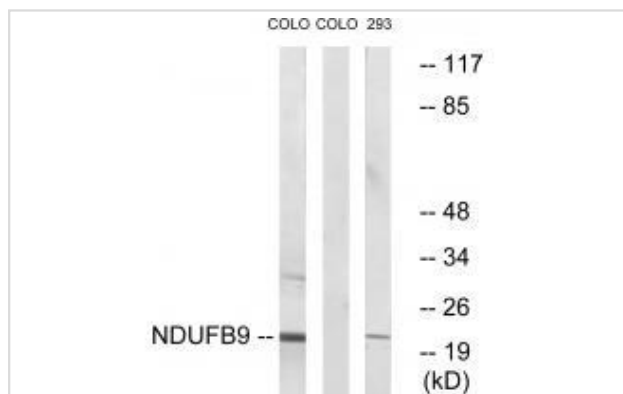
Description

Product Name	NDUFB9 Antibody
Host Species	Rabbit
Clonality	Polyclonal
Purification	The antibody was affinity-purified from rabbit antiserum by affinity-chromatography using epitope-specific immunogen.
Applications	WB
Species Reactivity	Hu
Specificity	The antibody detects endogenous levels of total NDUFB9 protein.
Immunogen Type	Peptide
Immunogen Description	Synthesized peptide derived from internal of human NDUFB9.
Target Name	NDUFB9
Other Names	B22; CI-B22; complex I-B22; EC 1.6.5.3; EC 1.6.99.3
Accession No.	Swiss-Prot: Q9Y6M9NCBI Gene ID: 4715
Uniprot	Q9Y6M9
GeneID	4715;
SDS-PAGE MW	22kd
Concentration	1.0mg/ml
Formulation	Rabbit IgG in phosphate buffered saline (without Mg ²⁺ and Ca ²⁺), pH 7.4, 150mM NaCl, 0.02% sodium azide and 50% glycerol.
Storage	Store at -20°C

Application Details

Western blotting: 1:500~1:3000

Images



Western blot analysis of extracts from COLO cells and 293 cells, using NDUFB9 antibody #34832.

Background

Accessory subunit of the mitochondrial membrane respiratory chain NADH dehydrogenase (Complex I), that is believed to be not involved in catalysis. Complex I functions in the transfer of electrons from NADH to the respiratory chain. The immediate electron acceptor for the enzyme is believed to be ubiquinone.

Triepels R., Submitted (JAN-1998) to the EMBL/GenBank/DDBJ databases.

Lin X., Hum. Hered. 49:75-80(1999).

Ye Z., Biochem. Biophys. Res. Commun. 275:223-227(2000).

Note: This product is for in vitro research use only