

NDUFV2 Antibody

Catalog No: #34833

Package Size: #34833-1 50ul #34833-2 100ul

Orders: order@signalwayantibody.comSupport: tech@signalwayantibody.com

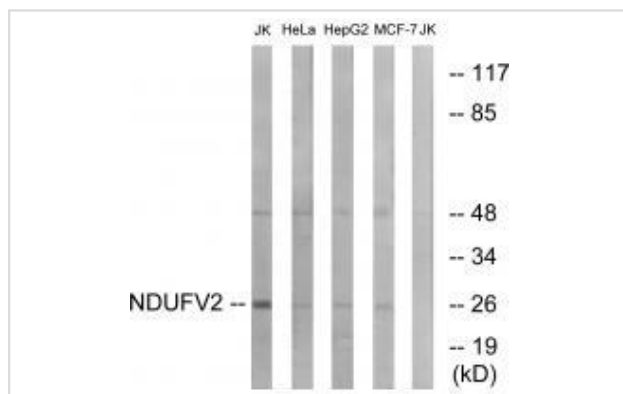
Description

Product Name	NDUFV2 Antibody
Host Species	Rabbit
Clonality	Polyclonal
Purification	The antibody was affinity-purified from rabbit antiserum by affinity-chromatography using epitope-specific immunogen.
Applications	WB
Species Reactivity	Hu Ms Rt
Specificity	The antibody detects endogenous levels of total NDUFV2 protein.
Immunogen Type	Peptide
Immunogen Description	Synthesized peptide derived from internal of human NDUFV2.
Target Name	NDUFV2
Other Names	EC 1.6.5.3; EC 1.6.99.3; NDUV2;
Accession No.	Swiss-Prot: P19404NCBI Gene ID: 4729
Uniprot	P19404
GeneID	4729;
SDS-PAGE MW	27kd
Concentration	1.0mg/ml
Formulation	Rabbit IgG in phosphate buffered saline (without Mg ²⁺ and Ca ²⁺), pH 7.4, 150mM NaCl, 0.02% sodium azide and 50% glycerol.
Storage	Store at -20°C

Application Details

Western blotting: 1:500~1:3000

Images



Western blot analysis of extracts from Jurkat cells, HeLa cells, HepG2 cells and MCF-7 cells, using NDUFV2 antibody #34833.

Background

Core subunit of the mitochondrial membrane respiratory chain NADH dehydrogenase (Complex I) that is believed to belong to the minimal assembly required for catalysis. Complex I functions in the transfer of electrons from NADH to the respiratory chain. The immediate electron acceptor for the enzyme is believed to be ubiquinone By similarity.

Pilkington S.J., Biochemistry 28:3257-3264(1989).

The MGC Project Team; Genome Res. 14:2121-2127(2004).

Note: This product is for in vitro research use only