

## MT-ND5 Antibody

Catalog No: #34840

Package Size: #34840-1 50ul #34840-2 100ul

Orders: order@signalwayantibody.com

Support: tech@signalwayantibody.com

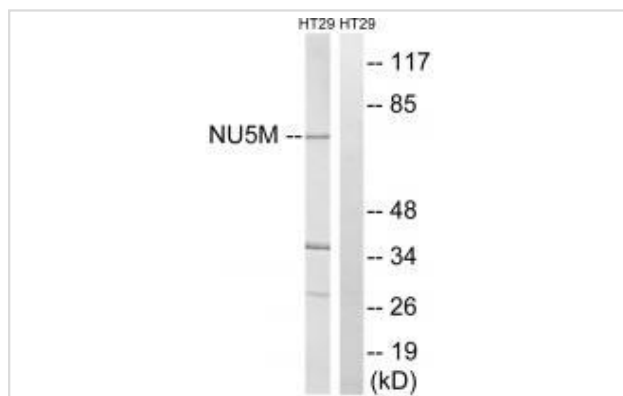
## Description

Product Name	MT-ND5 Antibody
Host Species	Rabbit
Clonality	Polyclonal
Purification	The antibody was affinity-purified from rabbit antiserum by affinity-chromatography using epitope-specific immunogen.
Applications	WB
Species Reactivity	Hu
Specificity	The antibody detects endogenous levels of total MT-ND5 protein.
Immunogen Type	Peptide
Immunogen Description	Synthesized peptide derived from internal of human MT-ND5.
Target Name	MT-ND5
Other Names	NADH-ubiquinone oxidoreductase chain 5; EC=1.6.5.3; NADH dehydrogenase subunit 5; MTND5; NADH5
Accession No.	Swiss-Prot: P03915NCBI Gene ID: 4540
Uniprot	P03915
GeneID	4540;
SDS-PAGE MW	70kd
Concentration	1.0mg/ml
Formulation	Rabbit IgG in phosphate buffered saline (without Mg <sup>2+</sup> and Ca <sup>2+</sup> ), pH 7.4, 150mM NaCl, 0.02% sodium azide and 50% glycerol.
Storage	Store at -20°C

## Application Details

Western blotting: 1:500~1:3000

## Images



Western blot analysis of extracts from HT-29 cells, using MT-ND5 antibody #34840.

## Background

---

Core subunit of the mitochondrial membrane respiratory chain NADH dehydrogenase (Complex I) that is believed to belong to the minimal assembly required for catalysis. Complex I functions in the transfer of electrons from NADH to the respiratory chain. The immediate electron acceptor for the enzyme is believed to be ubiquinone By similarity.

Anderson S., Nature 290:457-465(1981).

Horai S., Proc. Natl. Acad. Sci. U.S.A. 92:532-536(1995).

Maca-Meyer N., BMC Genet. 2:13-13(2001).

---

Note: This product is for in vitro research use only