

ME1 Antibody

Catalog No: #34842

Package Size: #34842-1 50ul #34842-2 100ul

Orders: order@signalwayantibody.com

Support: tech@signalwayantibody.com

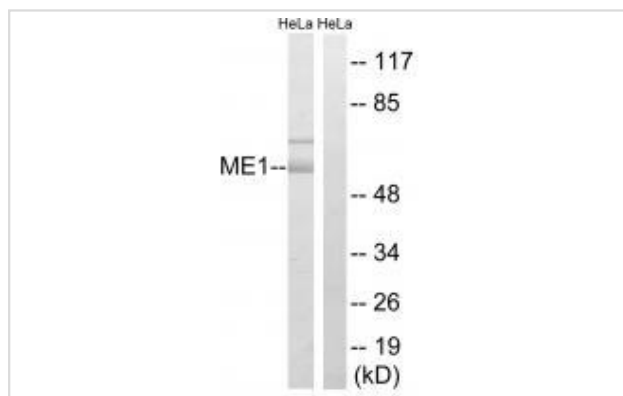
Description

Product Name	ME1 Antibody
Host Species	Rabbit
Clonality	Polyclonal
Purification	The antibody was affinity-purified from rabbit antiserum by affinity-chromatography using epitope-specific immunogen.
Applications	WB
Species Reactivity	Hu
Specificity	The antibody detects endogenous levels of total ME1 protein.
Immunogen Type	Peptide
Immunogen Description	Synthesized peptide derived from internal of human ME1.
Target Name	ME1
Other Names	NADP-dependent malic enzyme; EC 1.1.1.40; NADP-ME; Malic enzyme 1;
Accession No.	Swiss-Prot: P48163NCBI Gene ID: 4199
Uniprot	P48163
GeneID	4199;
SDS-PAGE MW	64kd
Concentration	1.0mg/ml
Formulation	Rabbit IgG in phosphate buffered saline (without Mg ²⁺ and Ca ²⁺), pH 7.4, 150mM NaCl, 0.02% sodium azide and 50% glycerol.
Storage	Store at -20°C

Application Details

Western blotting: 1:500~1:3000

Images



Western blot analysis of extracts from HeLa cells, using ME1 antibody #34842.

Background

This gene encodes a cytosolic, NADP-dependent enzyme that generates NADPH for fatty acid biosynthesis. The activity of this enzyme, the reversible oxidative decarboxylation of malate, links the glycolytic and citric acid cycles. The regulation of expression for this gene is complex. Increased expression can result from elevated levels of thyroid hormones or by higher proportions of carbohydrates in the diet.

Loeber G., FEBS Lett. 344:181-186(1994).

Gonzalez-Manchon C., Gene 159:255-260(1995).

Totoki Y., Submitted (APR-2005) to the EMBL/GenBank/DDBJ databases.

Note: This product is for in vitro research use only