

## ME3 Antibody

Catalog No: #34843

Package Size: #34843-1 50ul #34843-2 100ul

Orders: [order@signalwayantibody.com](mailto:order@signalwayantibody.com)Support: [tech@signalwayantibody.com](mailto:tech@signalwayantibody.com)

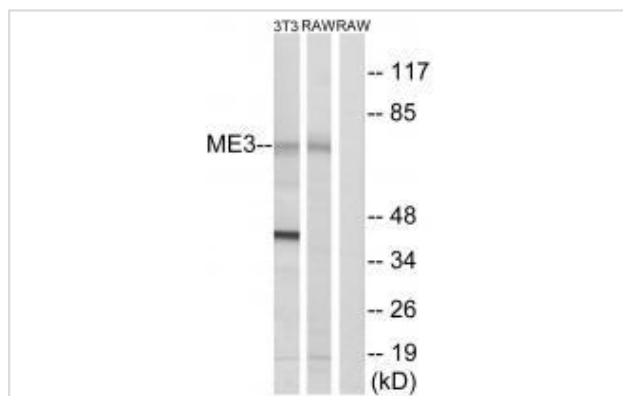
## Description

Product Name	ME3 Antibody
Host Species	Rabbit
Clonality	Polyclonal
Purification	The antibody was affinity-purified from rabbit antiserum by affinity-chromatography using epitope-specific immunogen.
Applications	WB
Species Reactivity	Hu Ms
Specificity	The antibody detects endogenous levels of total ME3 protein.
Immunogen Type	Peptide
Immunogen Description	Synthesized peptide derived from internal of human ME3.
Target Name	ME3
Other Names	malic enzyme 3; NADP(+)-dependent; mitochondrial;
Accession No.	Swiss-Prot: Q16798NCBI Gene ID: 10873
Uniprot	Q16798
GeneID	10873;
SDS-PAGE MW	67kd
Concentration	1.0mg/ml
Formulation	Rabbit IgG in phosphate buffered saline (without Mg <sup>2+</sup> and Ca <sup>2+</sup> ), pH 7.4, 150mM NaCl, 0.02% sodium azide and 50% glycerol.
Storage	Store at -20°C

## Application Details

Western blotting: 1:500~1:3000

## Images



Western blot analysis of extracts from 3T3 cells and RAW264.7 cells, using ME3 antibody #34843.

## Background

Malic enzyme catalyzes the oxidative decarboxylation of malate to pyruvate using either NAD<sup>+</sup> or NADP<sup>+</sup> as a cofactor. Mammalian tissues contain 3 distinct isoforms of malic enzyme: a cytosolic NADP(+)-dependent isoform, a mitochondrial NADP(+)-dependent isoform, and a mitochondrial NAD(+)-dependent isoform. This gene encodes a mitochondrial NADP(+)-dependent isoform. Multiple alternatively spliced transcript variants have been found for this gene, but the biological validity of some variants has not been determined.

Loeber G., Biochem. J. 304:687-692(1994).

---

Note: This product is for in vitro research use only