

NPHP4 Antibody

Catalog No: #34846

Package Size: #34846-1 50ul #34846-2 100ul

Orders: order@signalwayantibody.comSupport: tech@signalwayantibody.com

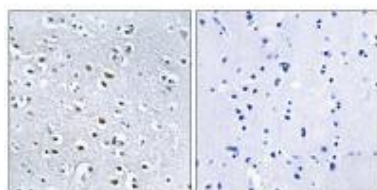
Description

Product Name	NPHP4 Antibody
Host Species	Rabbit
Clonality	Polyclonal
Purification	The antibody was affinity-purified from rabbit antiserum by affinity-chromatography using epitope-specific immunogen.
Applications	IHC
Species Reactivity	Hu
Specificity	The antibody detects endogenous levels of total NPHP4 protein.
Immunogen Type	Peptide
Immunogen Description	Synthesized peptide derived from internal of human NPHP4.
Target Name	NPHP4
Other Names	Nephrocystin-4; Nephroretinin;
Accession No.	Swiss-Prot: O75161NCBI Gene ID: 261734
Uniprot	O75161
GeneID	261734;
SDS-PAGE MW	158kd
Concentration	1.0mg/ml
Formulation	Rabbit IgG in phosphate buffered saline (without Mg ²⁺ and Ca ²⁺), pH 7.4, 150mM NaCl, 0.02% sodium azide and 50% glycerol.
Storage	Store at -20°C

Application Details

Immunohistochemistry: 1:50~1:100

Images



Immunohistochemistry analysis of paraffin-embedded human colon carcinoma tissue using NPHP4 antibody #34846.

Background

Involved in the organization of apical junctions in kidney cells together with NPHP1 and RPGRIP1L/NPHP8 By similarity. Does not seem to be strictly required for ciliogenesis By similarity.

Mollet G., Nat. Genet. 32:300-305(2002).

Mollet G., Nat. Genet. 32:459-459(2002).

Otto E., Am. J. Hum. Genet. 71:1161-1167(2002).

Note: This product is for in vitro research use only