

NID1 Antibody

Catalog No: #34865

Package Size: #34865-1 50ul #34865-2 100ul

Orders: order@signalwayantibody.comSupport: tech@signalwayantibody.com

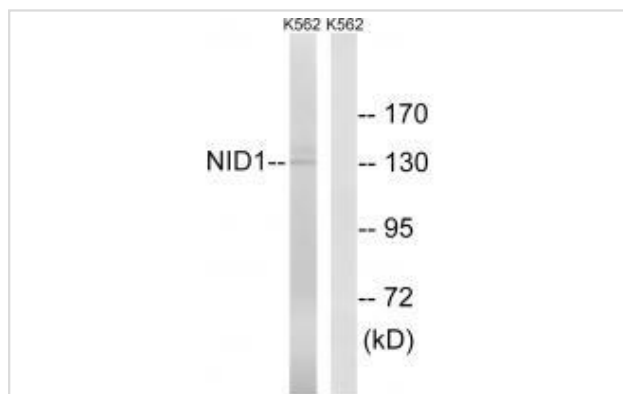
Description

Product Name	NID1 Antibody
Host Species	Rabbit
Clonality	Polyclonal
Purification	The antibody was affinity-purified from rabbit antiserum by affinity-chromatography using epitope-specific immunogen.
Applications	WB
Species Reactivity	Hu
Specificity	The antibody detects endogenous levels of total NID1 protein.
Immunogen Type	Peptide
Immunogen Description	Synthesized peptide derived from internal of human NID1.
Target Name	NID1
Other Names	Nidogen-1; Entactin;
Accession No.	Swiss-Prot: P14543NCBI Gene ID: 4811
Uniprot	P14543
GeneID	4811;
SDS-PAGE MW	136kd
Concentration	1.0mg/ml
Formulation	Rabbit IgG in phosphate buffered saline (without Mg ²⁺ and Ca ²⁺), pH 7.4, 150mM NaCl, 0.02% sodium azide and 50% glycerol.
Storage	Store at -20°C

Application Details

Western blotting: 1:500~1:3000

Images



Western blot analysis of extracts from K562 cells, using NID1 antibody #34865.

Background

Sulfated glycoprotein widely distributed in basement membranes and tightly associated with laminin. Also binds to collagen IV and perlecan. It probably has a role in cell-extracellular matrix interactions.

Nagayoshi T., DNA 8:581-594(1989).

Zimmermann K., Genomics 27:245-250(1995).

Gregory S.G., Nature 441:315-321(2006)

Note: This product is for in vitro research use only