

OAT Antibody

Catalog No: #34882

Package Size: #34882-1 50ul #34882-2 100ul

Orders: order@signalwayantibody.comSupport: tech@signalwayantibody.com

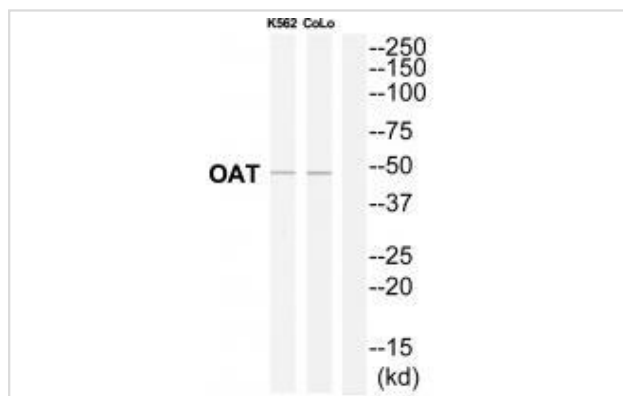
Description

Product Name	OAT Antibody
Host Species	Rabbit
Clonality	Polyclonal
Purification	The antibody was affinity-purified from rabbit antiserum by affinity-chromatography using epitope-specific immunogen.
Applications	WB
Species Reactivity	Hu Ms Rt
Specificity	The antibody detects endogenous levels of total OAT protein.
Immunogen Type	Peptide
Immunogen Description	Synthesized peptide derived from Internal of human OAT.
Target Name	OAT
Other Names	DKFZp781A11155; GACR; gyrate atrophy; HOGA; OAT
Accession No.	Swiss-Prot: P04181NCBI Gene ID: 4942
Uniprot	P04181
GeneID	4942;
SDS-PAGE MW	49kd
Concentration	1.0mg/ml
Formulation	Rabbit IgG in phosphate buffered saline (without Mg ²⁺ and Ca ²⁺), pH 7.4, 150mM NaCl, 0.02% sodium azide and 50% glycerol.
Storage	Store at -20°C

Application Details

Western blotting: 1:500~1:3000

Images



Western blot analysis of extracts from K562/COLO205 cells, using OAT antibody #34882.

Background

This gene encodes the mitochondrial enzyme ornithine aminotransferase, which is a key enzyme in the pathway that converts arginine and ornithine into the major excitatory and inhibitory neurotransmitters glutamate and GABA. Mutations that result in a deficiency of this enzyme cause the autosomal recessive eye disease Gyrate Atrophy. Alternatively spliced transcript variants encoding different isoforms have been described. Related pseudogenes have been defined on the X chromosome.

ana G., Proc. Natl. Acad. Sci. U.S.A. 83:1203-1207(1986).

Ramesh V., DNA 5:493-501(1986).

Note: This product is for in vitro research use only