

KCNK1 Antibody

Catalog No: #34910

Package Size: #34910-1 50ul #34910-2 100ul

Orders: order@signalwayantibody.com

Support: tech@signalwayantibody.com

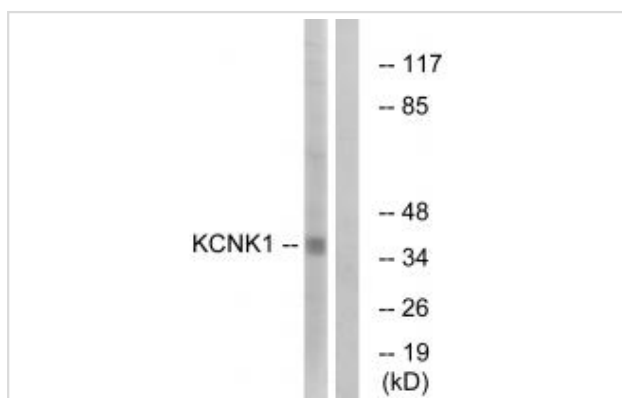
Description

Product Name	KCNK1 Antibody
Host Species	Rabbit
Clonality	Polyclonal
Purification	The antibody was affinity-purified from rabbit antiserum by affinity-chromatography using epitope-specific immunogen.
Applications	WB
Species Reactivity	Hu Rt
Specificity	The antibody detects endogenous levels of total KCNK1 protein.
Immunogen Type	Peptide
Immunogen Description	Synthesized peptide derived from internal of human KCNK1.
Target Name	KCNK1
Other Names	Inward rectifying potassium channel protein TWIK-1; Potassium channel KCNO1; Potassium channel subfamily K member 1;
Accession No.	Swiss-Prot: O00180NCBI Gene ID: 3775
SDS-PAGE MW	38kd
Concentration	1.0mg/ml
Formulation	Rabbit IgG in phosphate buffered saline (without Mg ²⁺ and Ca ²⁺), pH 7.4, 150mM NaCl, 0.02% sodium azide and 50% glycerol.
Storage	Store at -20°C

Application Details

Western blotting: 1:500~1:3000

Images



Western blot analysis of extracts from Jurkat cells, using KCNK1 antibody #34910.

Background

Weakly inward rectifying potassium channel.

Lesage F., EMBO J. 15:1004-1011(1996).

Goldstein S.A.N., J. Mol. Med. 76:13-20(1998).

Orias M., Am. J. Physiol. 273:F663-F666(1997)

Note: This product is for in vitro research use only and is not intended for use in humans or animals.