

## KCNT1 Antibody

Catalog No: #34913

Package Size: #34913-1 50ul #34913-2 100ul

Orders: [order@signalwayantibody.com](mailto:order@signalwayantibody.com)Support: [tech@signalwayantibody.com](mailto:tech@signalwayantibody.com)

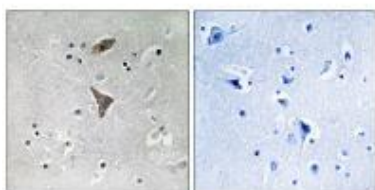
## Description

Product Name	KCNT1 Antibody
Host Species	Rabbit
Clonality	Polyclonal
Purification	The antibody was affinity-purified from rabbit antiserum by affinity-chromatography using epitope-specific immunogen.
Applications	IHC
Species Reactivity	Hu
Specificity	The antibody detects endogenous levels of total KCNT1 protein.
Immunogen Type	Peptide
Immunogen Description	Synthesized peptide derived from C-terminal of human KCNT1.
Target Name	KCNT1
Other Names	Potassium channel subfamily T member 1; KCa4.1;
Accession No.	Swiss-Prot: Q5JUK3NCBI Gene ID: 57582
Uniprot	Q5JUK3
GeneID	57582;
SDS-PAGE MW	140kd
Concentration	1.0mg/ml
Formulation	Rabbit IgG in phosphate buffered saline (without Mg <sup>2+</sup> and Ca <sup>2+</sup> ), pH 7.4, 150mM NaCl, 0.02% sodium azide and 50% glycerol.
Storage	Store at -20°C

## Application Details

Immunohistochemistry: 1:50~1:100

## Images



Immunohistochemistry analysis of paraffin-embedded human brain tissue using KCNT1 antibody #34913.

## Background

---

Outwardly rectifying potassium channel subunit that may coassemble with other Slo-type channel subunits. Activated by high intracellular sodium or chloride levels. Activated upon stimulation of G-protein coupled receptors, such as CHRM1 and GRIA1. May be regulated by calcium in the absence of sodium ions (in vitro) By similarity.

Humphray S.J., Nature 429:369-374(2004).

Nagase T., DNA Res. 7:65-73(2000).

---

Note: This product is for in vitro research use only