

## KCNA1 Antibody

Catalog No: #34914

Package Size: #34914-1 50ul #34914-2 100ul

Orders: [order@signalwayantibody.com](mailto:order@signalwayantibody.com)Support: [tech@signalwayantibody.com](mailto:tech@signalwayantibody.com)

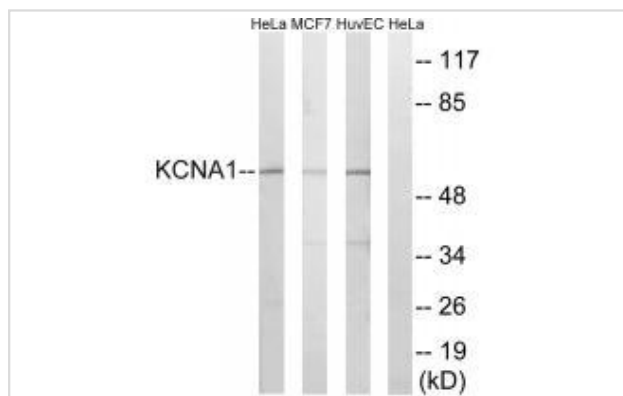
## Description

Product Name	KCNA1 Antibody
Host Species	Rabbit
Clonality	Polyclonal
Purification	The antibody was affinity-purified from rabbit antiserum by affinity-chromatography using epitope-specific immunogen.
Applications	WB
Species Reactivity	Hu Ms
Specificity	The antibody detects endogenous levels of total KCNA1 protein.
Immunogen Type	Peptide
Immunogen Description	Synthesized peptide derived from internal of human KCNA1.
Target Name	KCNA1
Other Names	HBK1; HUK1; KCNA1; potassium channel Kv1.1; potassium voltage-gated channel subfamily A member 1
Accession No.	Swiss-Prot: Q09470NCBI Gene ID: 3736
Uniprot	Q09470
GeneID	3736;
SDS-PAGE MW	57kd
Concentration	1.0mg/ml
Formulation	Rabbit IgG in phosphate buffered saline (without Mg <sup>2+</sup> and Ca <sup>2+</sup> ), pH 7.4, 150mM NaCl, 0.02% sodium azide and 50% glycerol.
Storage	Store at -20°C

## Application Details

Western blotting: 1:500~1:3000

## Images



Western blot analysis of extracts from HeLa cells, MCF-7 cells and HuvEc cells, using KCNA1 antibody #34914.

## Background

---

Mediates the voltage-dependent potassium ion permeability of excitable membranes. Assuming opened or closed conformations in response to the voltage difference across the membrane, the protein forms a potassium-selective channel through which potassium ions may pass in accordance with their electrochemical gradient.

Chapman C.G., Brain Res. Mol. Brain Res. 82-74-83(2000).

Gray A.T., Submitted (MAR-2000) to the EMBL/GenBank/DDBJ databases.

Lesage F., FEBS Lett. 471:137-140(2000).

---

Note: This product is for in vitro research use only