

## KCND1 Antibody

Catalog No: #34916

Package Size: #34916-1 50ul #34916-2 100ul

Orders: [order@signalwayantibody.com](mailto:order@signalwayantibody.com)Support: [tech@signalwayantibody.com](mailto:tech@signalwayantibody.com)

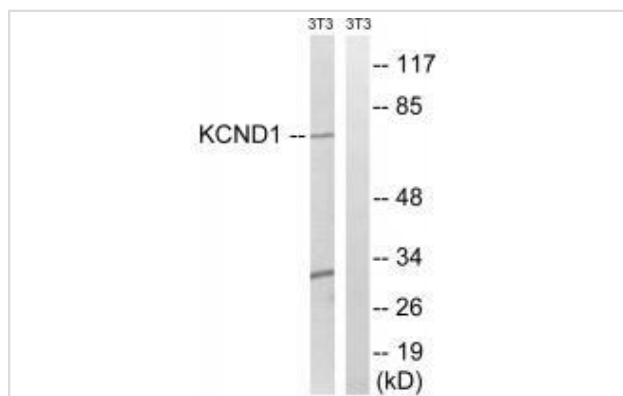
## Description

Product Name	KCND1 Antibody
Host Species	Rabbit
Clonality	Polyclonal
Purification	The antibody was affinity-purified from rabbit antiserum by affinity-chromatography using epitope-specific immunogen.
Applications	WB
Species Reactivity	Hu Ms
Specificity	The antibody detects endogenous levels of total KCND1 protein.
Immunogen Type	Peptide
Immunogen Description	Synthesized peptide derived from C-terminal of human KCND1.
Target Name	KCND1
Other Names	KV4.1; potassium voltage-gated channel subfamily D member 1; potassium voltage-gated channel; Shal-related subfamily; member 1
Accession No.	Swiss-Prot: Q9NSA2NCBI Gene ID: 3750
Uniprot	Q9NSA2
GeneID	3750;
SDS-PAGE MW	70kd
Concentration	1.0mg/ml
Formulation	Rabbit IgG in phosphate buffered saline (without Mg <sup>2+</sup> and Ca <sup>2+</sup> ), pH 7.4, 150mM NaCl, 0.02% sodium azide and 50% glycerol.
Storage	Store at -20°C

## Application Details

Western blotting: 1:500~1:3000

## Images



Western blot analysis of extracts from 3T3 cells, using KCND1 antibody #34916.

## Background

Pore-forming (alpha) subunit of voltage-gated rapidly inactivating A-type potassium channels. May contribute to I(To) current in heart and I(Sa) current in neurons. Channel properties are modulated by interactions with other alpha subunits and with regulatory subunits.

Isbrandt D., Genomics 64:144-154(2000).

Makita N., Submitted (DEC-1998) to the EMBL/GenBank/DDBJ databases.

Strom T.M., Submitted (APR-1998) to the EMBL/GenBank/DDBJ databases.

---

Note: This product is for in vitro research use only