

KCNH3 Antibody

Catalog No: #34918

Package Size: #34918-1 50ul #34918-2 100ul

Orders: order@signalwayantibody.comSupport: tech@signalwayantibody.com

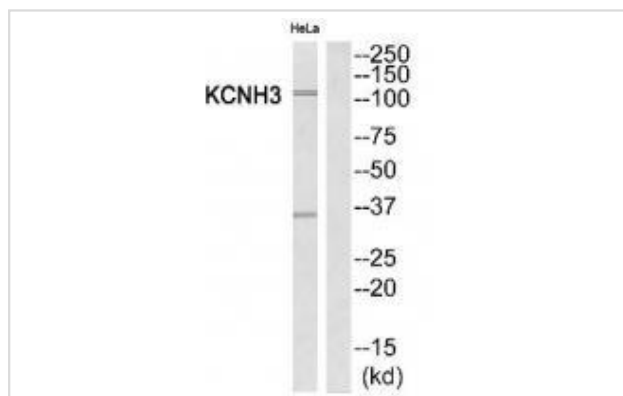
Description

Product Name	KCNH3 Antibody
Host Species	Rabbit
Clonality	Polyclonal
Purification	The antibody was affinity-purified from rabbit antiserum by affinity-chromatography using epitope-specific immunogen.
Applications	WB
Species Reactivity	Hu Ms Rt
Specificity	The antibody detects endogenous levels of total KCNH3 protein.
Immunogen Type	Peptide
Immunogen Description	Synthesized peptide derived from Internal of human KCNH3.
Target Name	KCNH3
Other Names	BEC1; Brain-specific eag-like channel 1; ELK channel 2; ELK2; ether-a-go-go K(+) channel family member
Accession No.	Swiss-Prot: Q9ULD8NCBI Gene ID: 23416
Uniprot	Q9ULD8
GeneID	23416;
SDS-PAGE MW	117kd
Concentration	1.0mg/ml
Formulation	Rabbit IgG in phosphate buffered saline (without Mg ²⁺ and Ca ²⁺), pH 7.4, 150mM NaCl, 0.02% sodium azide and 50% glycerol.
Storage	Store at -20°C

Application Details

Western blotting: 1:500~1:3000

Images



Western blot analysis of extracts from HeLa cells, using KCNH3 antibody #34918.

Background

Pore-forming (alpha) subunit of voltage-gated potassium channel. Elicits an outward current with fast inactivation. Channel properties may be modulated by cAMP and subunit assembly.

Miyake A., J. Biol. Chem. 274:25018-25025(1999).

Nagase T., DNA Res. 6:337-345(1999).

Note: This product is for in vitro research use only