

FAM35A/B Antibody

Catalog No: #34929

Package Size: #34929-1 50ul #34929-2 100ul

Orders: order@signalwayantibody.comSupport: tech@signalwayantibody.com

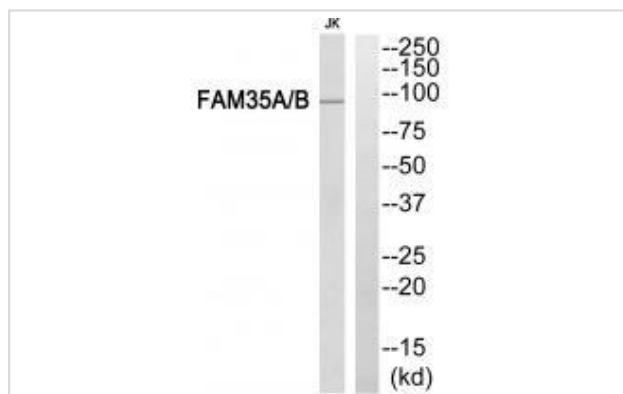
Description

Product Name	FAM35A/B Antibody
Host Species	Rabbit
Clonality	Polyclonal
Purification	The antibody was affinity-purified from rabbit antiserum by affinity-chromatography using epitope-specific immunogen.
Applications	WB
Species Reactivity	Hu
Specificity	The antibody detects endogenous levels of total FAM35A/B protein.
Immunogen Type	Peptide
Immunogen Description	Synthesized peptide derived from internal of human FAM35A/B.
Target Name	FAM35A/B
Other Names	Protein FAM35A; Protein FAM35B;
Accession No.	Swiss-Prot: Q86V20/A6NDK8NCBI Gene ID: 54537
Uniprot	Q86V20
GeneID	54537;
SDS-PAGE MW	94kd
Concentration	1.0mg/ml
Formulation	Rabbit IgG in phosphate buffered saline (without Mg ²⁺ and Ca ²⁺), pH 7.4, 150mM NaCl, 0.02% sodium azide and 50% glycerol.
Storage	Store at -20°C

Application Details

Western blotting: 1:500~1:3000

Images



Western blot analysis of extracts from Jurkat cells, using FAM35A/B antibody #34929.

Background

Belongs to the FAM35 family. 2 isoforms of the human protein are produced by alternative splicing.

Deloukas P., Nature 429:375-381(2004).

The MGC Project Team, Genome Res. 14:2121-2127(2004).

Ota T., Nat. Genet. 36:40-45(2004).

Note: This product is for in vitro research use only