

SSH3 Antibody

Catalog No: #34935

Package Size: #34935-1 50ul #34935-2 100ul

Orders: order@signalwayantibody.comSupport: tech@signalwayantibody.com

Description

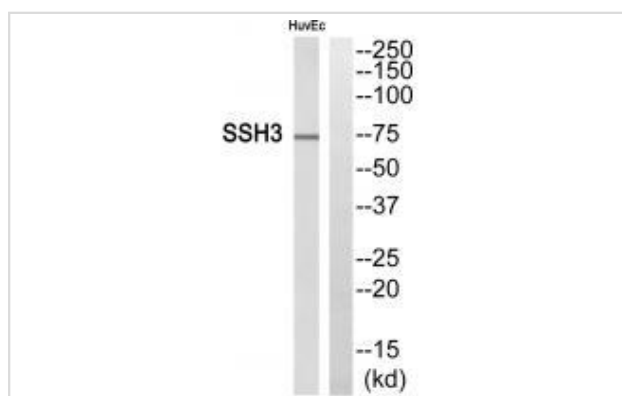
Product Name	SSH3 Antibody
Host Species	Rabbit
Clonality	Polyclonal
Purification	The antibody was affinity-purified from rabbit antiserum by affinity-chromatography using epitope-specific immunogen.
Applications	WB IHC
Species Reactivity	Hu
Specificity	The antibody detects endogenous levels of total SSH3 protein.
Immunogen Type	Peptide
Immunogen Description	Synthesized peptide derived from internal of human SSH3.
Target Name	SSH3
Other Names	Protein phosphatase Slingshot homolog 3; SSH-3L; hSSH-3L;
Accession No.	Swiss-Prot: Q8TE77NCBI Gene ID: 54961
Uniprot	Q8TE77
GeneID	54961;
SDS-PAGE MW	74kd
Concentration	1.0mg/ml
Formulation	Rabbit IgG in phosphate buffered saline (without Mg ²⁺ and Ca ²⁺), pH 7.4, 150mM NaCl, 0.02% sodium azide and 50% glycerol.
Storage	Store at -20°C

Application Details

Western blotting: 1:500~1:3000

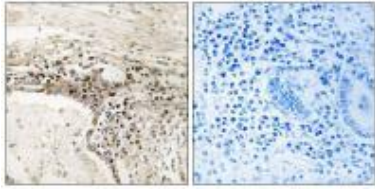
Immunohistochemistry: 1:50~1:100

Images



Western blot analysis of extracts from HuvEc cells, using SSH3 antibody #34935.

Immunohistochemistry analysis of paraffin-embedded human lung carcinoma tissue using SSH3 antibody #34935.



Background

Protein phosphatase which may play a role in the regulation of actin filament dynamics. Can dephosphorylate and activate the actin binding/depolymerizing factor cofilin, which subsequently binds to actin filaments and stimulates their disassembly By similarity.

Niwa R., Cell 108:233-246(2002).

Ohta Y., Genes Cells 8:811-824(2003).

Ota T., Nat. Genet. 36:40-45(2004).

Note: This product is for in vitro research use only