

S100Z Antibody

Catalog No: #34938

Package Size: #34938-1 50ul #34938-2 100ul

Orders: order@signalwayantibody.comSupport: tech@signalwayantibody.com

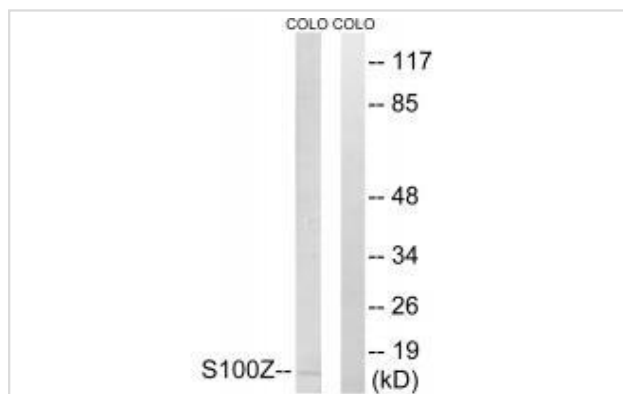
Description

Product Name	S100Z Antibody
Host Species	Rabbit
Clonality	Polyclonal
Purification	The antibody was affinity-purified from rabbit antiserum by affinity-chromatography using epitope-specific immunogen.
Applications	WB
Species Reactivity	Hu
Specificity	The antibody detects endogenous levels of total S100Z protein.
Immunogen Type	Peptide
Immunogen Description	Synthesized peptide derived from internal of human S100Z.
Target Name	S100Z
Other Names	Protein S100-Z; S100 calcium-binding protein Z;
Accession No.	Swiss-Prot: Q8WVG8NCBI Gene ID: 170591
Uniprot	Q8WVG8
GeneID	170591;
SDS-PAGE MW	12kd
Concentration	1.0mg/ml
Formulation	Rabbit IgG in phosphate buffered saline (without Mg ²⁺ and Ca ²⁺), pH 7.4, 150mM NaCl, 0.02% sodium azide and 50% glycerol.
Storage	Store at -20°C

Application Details

Western blotting: 1:500~1:3000

Images



Western blot analysis of extracts from COLO cells, using S100Z antibody #34938.

Background

Members of the S100 protein family contain 2 calcium-binding EF-hands and exhibit cell-type specific expression patterns. For additional background information on S100 proteins, see MIM 114085.[supplied by OMIM, Mar 2008]

Gribenko A.V., Biochemistry 40:15538-15548(2001).

The MGC Project Team, Genome Res. 14:2121-2127(2004).

Note: This product is for in vitro research use only