

RAB11FIP3 Antibody

Catalog No: #34950

Package Size: #34950-1 50ul #34950-2 100ul

Orders: order@signalwayantibody.comSupport: tech@signalwayantibody.com

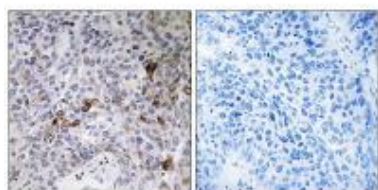
Description

| | |
|-----------------------|--|
| Product Name | RAB11FIP3 Antibody |
| Host Species | Rabbit |
| Clonality | Polyclonal |
| Purification | The antibody was affinity-purified from rabbit antiserum by affinity-chromatography using epitope-specific immunogen. |
| Applications | IHC |
| Species Reactivity | Hu |
| Specificity | The antibody detects endogenous levels of total RAB11FIP3 protein. |
| Immunogen Type | Peptide |
| Immunogen Description | Synthesized peptide derived from C-terminal of human RAB11FIP3. |
| Target Name | RAB11FIP3 |
| Other Names | Rab11-FIP3; EF hands-containing Rab-interacting protein; Eferin; |
| Accession No. | Swiss-Prot: O75154NCBI Gene ID: 9727 |
| Uniprot | O75154 |
| GeneID | 9727; |
| SDS-PAGE MW | 83kd |
| Concentration | 1.0mg/ml |
| Formulation | Rabbit IgG in phosphate buffered saline (without Mg ²⁺ and Ca ²⁺), pH 7.4, 150mM NaCl, 0.02% sodium azide and 50% glycerol. |
| Storage | Store at -20°C |

Application Details

Immunohistochemistry: 1:50~1:100

Images



Immunohistochemistry analysis of paraffin-embedded human lung carcinoma tissue using RAB11FIP3 antibody #34950.

Background

Acts as a regulator of endocytic traffic by participating in membrane delivery. Required for the abscission step in cytokinesis, possibly by acting as an 'address tag' delivering recycling endosome membranes to the cleavage furrow during late cytokinesis. Also required for the structural integrity of the endosomal recycling compartment during interphase. May play a role in breast cancer cell motility by regulating actin cytoskeleton.

Prekeris R., J. Biol. Chem. 276:38966-38970(2001).

Ishikawa K., DNA Res. 5:169-176(1998).

Daniels R.J., Hum. Mol. Genet. 10:339-352(2001).

Note: This product is for in vitro research use only