

RASL10B Antibody

Catalog No: #34964

Package Size: #34964-1 50ul #34964-2 100ul

Orders: order@signalwayantibody.comSupport: tech@signalwayantibody.com

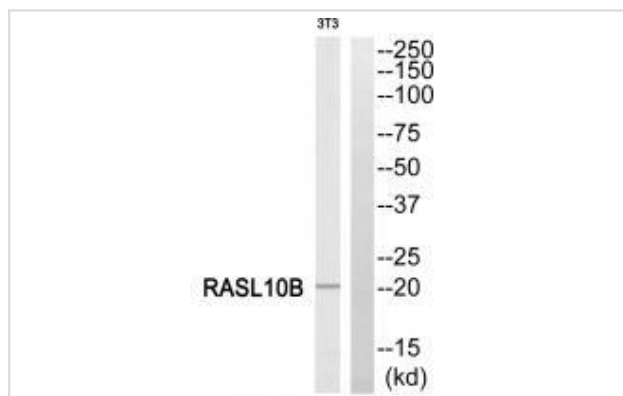
Description

Product Name	RASL10B Antibody
Host Species	Rabbit
Clonality	Polyclonal
Purification	The antibody was affinity-purified from rabbit antiserum by affinity-chromatography using epitope-specific immunogen.
Applications	WB
Species Reactivity	Hu Ms
Specificity	The antibody detects endogenous levels of total RASL10B protein.
Immunogen Type	Peptide
Immunogen Description	Synthesized peptide derived from internal of human RASL10B.
Target Name	RASL10B
Other Names	Ras-like protein family member 10B; Ras-like protein VTS58635;
Accession No.	Swiss-Prot: Q96S79NCBI Gene ID: 91608
Uniprot	Q96S79
GeneID	91608;
SDS-PAGE MW	22kd
Concentration	1.0mg/ml
Formulation	Rabbit IgG in phosphate buffered saline (without Mg ²⁺ and Ca ²⁺), pH 7.4, 150mM NaCl, 0.02% sodium azide and 50% glycerol.
Storage	Store at -20°C

Application Details

Western blotting: 1:500~1:3000

Images



Western blot analysis of extracts from 3T3 cells, using RASL10B antibody #34964.

Background

May facilitate the release of atrial natriuretic peptide by cardiomyocytes and hence play a role in the regulation of arterial pressure By similarity.
The MGC Project Team, Genome Res. 14:2121-2127(2004) [PubMed: 15489334].
Sjoeblom T., Science 314:268-274(2006) [PubMed: 16959974].

Note: This product is for in vitro research use only