

CNTFRa Antibody

Catalog No: #21641

Package Size: #21641-1 50ul #21641-2 100ul

Orders: order@signalwayantibody.comSupport: tech@signalwayantibody.com

Description

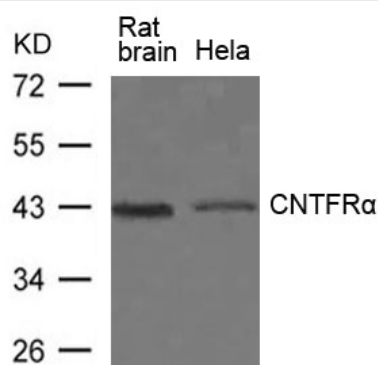
| | |
|-----------------------|---|
| Product Name | CNTFRa Antibody |
| Host Species | Rabbit |
| Clonality | Polyclonal |
| Purification | Antibodies were produced by immunizing rabbits with synthetic peptide and KLH conjugates. Antibodies were purified by affinity-chromatography using epitope-specific peptide. |
| Applications | WB |
| Species Reactivity | Hu Ms Rt |
| Specificity | The antibody detects endogenous levels of total CNTFRa protein. |
| Immunogen Type | Peptide-KLH |
| Immunogen Description | Peptide sequence around aa.119~123(N-T-Y-P-K) derived from Human CNTFRa |
| Target Name | CNTFRa |
| Other Names | MGC1774 |
| Accession No. | Swiss-Prot: P26992NCBI Protein: NP_001193940.1 |
| Uniprot | P26992 |
| GeneID | 1271; |
| Concentration | 1.0mg/ml |
| Formulation | Supplied at 1.0mg/mL in phosphate buffered saline (without Mg ²⁺ and Ca ²⁺), pH 7.4, 150mM NaCl, 0.02% sodium azide and 50% glycerol. |
| Storage | Store at -20°C for long term preservation (recommended). Store at 4°C for short term use. |

Application Details

Predicted MW: 41kd

Western blotting: 1:500~1:1000

Images



Western blot analysis of extracts from Rat brain tissue and HeLa cells using CNTFRa Antibody #21641.

Background

Binds to CNTF. The α subunit provides the receptor specificity.

Note: This product is for in vitro research use only