

RAB31 Antibody

Catalog No: #34968

Package Size: #34968-1 50ul #34968-2 100ul

Orders: order@signalwayantibody.comSupport: tech@signalwayantibody.com

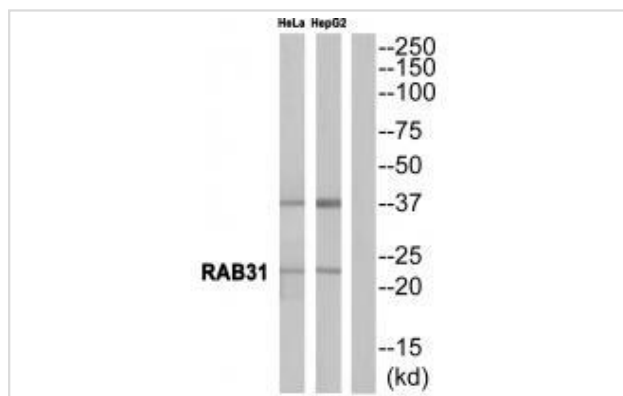
Description

Product Name	RAB31 Antibody
Host Species	Rabbit
Clonality	Polyclonal
Purification	The antibody was affinity-purified from rabbit antiserum by affinity-chromatography using epitope-specific immunogen.
Applications	WB
Species Reactivity	Hu Ms Rt
Specificity	The antibody detects endogenous levels of total RAB31 protein.
Immunogen Type	Peptide
Immunogen Description	Synthesized peptide derived from internal of human RAB31.
Target Name	RAB31
Other Names	Ras-related protein Rab-31; Ras-related protein Rab-22B;
Accession No.	Swiss-Prot: Q13636NCBI Gene ID: 11031
Uniprot	Q13636
GeneID	11031;
SDS-PAGE MW	21kd
Concentration	1.0mg/ml
Formulation	Rabbit IgG in phosphate buffered saline (without Mg ²⁺ and Ca ²⁺), pH 7.4, 150mM NaCl, 0.02% sodium azide and 50% glycerol.
Storage	Store at -20°C

Application Details

Western blotting: 1:500~1:3000

Images



Western blot analysis of extracts from HeLa cells and HepG2 cells, using RAB31 antibody #34968.

Background

The small GTPases Rab are key regulators of intracellular membrane trafficking, from the formation of transport vesicles to their fusion with membranes. Rabs cycle between an inactive GDP-bound form and an active GTP-bound form that is able to recruit to membranes different set of downstream effectors directly responsible for vesicle formation, movement, tethering and fusion. Required for the integrity and for normal function of the Golgi apparatus and the trans-Golgi network. Plays a role in insulin-stimulated translocation of GLUT4 to the cell membrane. Plays a role in M6PR transport from the trans-Golgi network to endosomes. Plays a role in the internalization of EGFR from the cell membrane into endosomes. Plays a role in the maturation of phagosomes that engulf pathogens, such as *S.aureus* and *M.tuberculosis*.

Chen D., Gene 174:129-134(1996) [PubMed: 8863739].

Bao X., Eur. J. Biochem. 269:259-271(2002) [PubMed: 11784320].

Ota T., Nat. Genet. 36:40-45(2004) [PubMed: 14702039].

Note: This product is for in vitro research use only