

## RGS1 Antibody

Catalog No: #34979

Package Size: #34979-1 50ul #34979-2 100ul

Orders: [order@signalwayantibody.com](mailto:order@signalwayantibody.com)Support: [tech@signalwayantibody.com](mailto:tech@signalwayantibody.com)

## Description

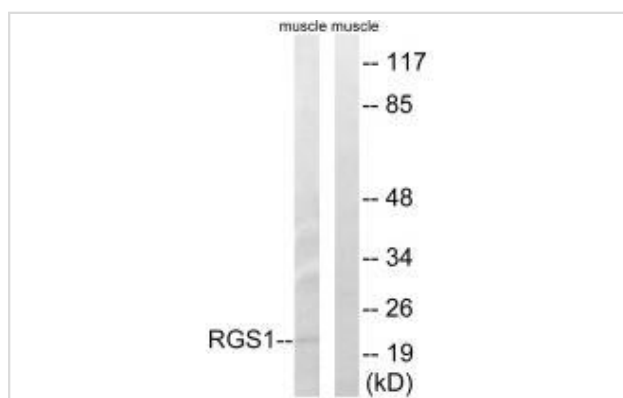
Product Name	RGS1 Antibody
Host Species	Rabbit
Clonality	Polyclonal
Purification	The antibody was affinity-purified from rabbit antiserum by affinity-chromatography using epitope-specific immunogen.
Applications	WB IHC
Species Reactivity	Hu Ms
Specificity	The antibody detects endogenous levels of total RGS1 protein.
Immunogen Type	Peptide
Immunogen Description	Synthesized peptide derived from internal of human RGS1.
Target Name	RGS1
Other Names	RGS1; Early response protein 1R20; B-cell activation protein BL34;
Accession No.	Swiss-Prot: Q08116NCBI Gene ID: 5996
Uniprot	Q08116
GeneID	5996;
SDS-PAGE MW	22kd
Concentration	1.0mg/ml
Formulation	Rabbit IgG in phosphate buffered saline (without Mg <sup>2+</sup> and Ca <sup>2+</sup> ), pH 7.4, 150mM NaCl, 0.02% sodium azide and 50% glycerol.
Storage	Store at -20°C

## Application Details

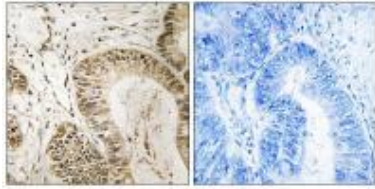
Western blotting: 1:500~1:3000

Immunohistochemistry: 1:50~1:100

## Images



Western blot analysis of extracts from mouse muscle cells, using RGS1 antibody #34979.



Immunohistochemistry analysis of paraffin-embedded human colon carcinoma tissue, using RGS1 antibody #34979.

## Background

Inhibits signal transduction by increasing the GTPase activity of G protein alpha subunits thereby driving them into their inactive GDP-bound form. This protein may be involved in the regulation of B-cell activation and proliferation.

Ota T., Nat. Genet. 36:40-45(2004).

Gregory S.G., Nature 441:315-321(2006).

Hong J.X., J. Immunol. 150:3895-3904(1993).

Note: This product is for in vitro research use only