

RGS5 Antibody

Catalog No: #34983

Package Size: #34983-1 50ul #34983-2 100ul

Orders: order@signalwayantibody.comSupport: tech@signalwayantibody.com

Description

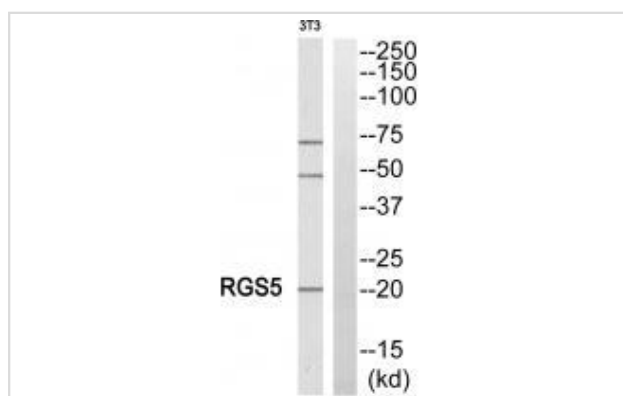
| | |
|-----------------------|--|
| Product Name | RGS5 Antibody |
| Host Species | Rabbit |
| Clonality | Polyclonal |
| Purification | The antibody was affinity-purified from rabbit antiserum by affinity-chromatography using epitope-specific immunogen. |
| Applications | WB,IHC,IF,ELISAB |
| Species Reactivity | Human,Mouse,Rat |
| Specificity | The antibody detects endogenous levels of total RGS5 protein. |
| Immunogen Type | Peptide |
| Immunogen Description | Synthesized peptide derived from internal of human RGS5. |
| Target Name | RGS5 |
| Other Names | MST092; MST106; MST129; MSTP032; MSTP092 |
| Accession No. | Swiss-Prot: O15539NCBI Gene ID: 8490 |
| Uniprot | O15539 |
| GeneID | 8490; |
| SDS-PAGE MW | 21kd |
| Concentration | 1.0mg/ml |
| Formulation | Rabbit IgG in phosphate buffered saline (without Mg ²⁺ and Ca ²⁺), pH 7.4, 150mM NaCl, 0.02% sodium azide and 50% glycerol. |
| Storage | Store at -20°C |

Application Details

Western blotting: 1:500~1:3000

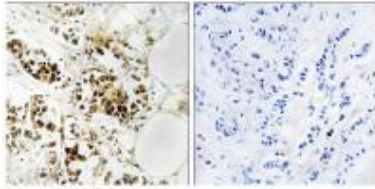
Immunohistochemistry: 1:50~1:100

Images



Western blot analysis of extracts from NIH/3T3 cells, using RGS5 antibody #34983.

Immunohistochemistry analysis of paraffin-embedded human breast carcinoma tissue, using RGS5 antibody #34983.



Background

Inhibits signal transduction by increasing the GTPase activity of G protein alpha subunits thereby driving them into their inactive GDP-bound form.

Binds to G(i)-alpha and G(o)-alpha, but not to G(s)-alpha By similarity.

Chatterjee T.K., Submitted (OCT-1997) to the EMBL/GenBank/DDBJ databases.

Seki N., J. Hum. Genet. 43:202-205(1998).

Cismowski M.J., Nat. Biotechnol. 17:878-883(1999).

Note: This product is for in vitro research use only