

## DDX4 Antibody

Catalog No: #21655

Package Size: #21655-1 50ul #21655-2 100ul

Orders: [order@signalwayantibody.com](mailto:order@signalwayantibody.com)Support: [tech@signalwayantibody.com](mailto:tech@signalwayantibody.com)

## Description

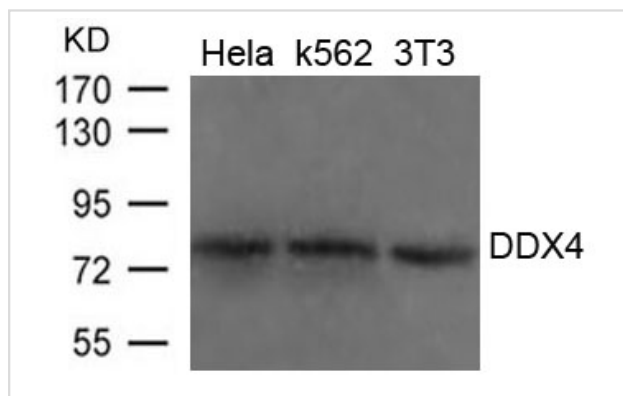
Product Name	DDX4 Antibody
Host Species	Rabbit
Clonality	Polyclonal
Purification	Antibodies were produced by immunizing rabbits with synthetic peptide and KLH conjugates. Antibodies were purified by affinity-chromatography using epitope-specific peptide.
Applications	WB
Species Reactivity	Hu Ms Rt
Specificity	The antibody detects endogenous level of total DDX4 protein.
Immunogen Type	Peptide-KLH
Immunogen Description	Peptide sequence around aa.273~277(T-I-L-V-E)derived from Human DDX4.
Target Name	DDX4
Other Names	VASA; MGC111074;
Accession No.	Swiss-Prot: Q9NQI0NCBI Protein: NP_077726.1
Uniprot	Q9NQI0
GeneID	54514;
Concentration	1.0mg/ml
Formulation	Supplied at 1.0mg/mL in phosphate buffered saline (without Mg <sup>2+</sup> and Ca <sup>2+</sup> ), pH 7.4, 150mM NaCl, 0.02% sodium azide and 50% glycerol.
Storage	Store at -20°C for long term preservation (recommended). Store at 4°C for short term use.

## Application Details

Predicted MW: 80kd

Western blotting: 1:500~1:1000

## Images



Western blot analysis of extracts from HeLa, K562 and 3T3 cells using DDX4 Antibody #21655.

## Background

---

May play a role in germ cell development. May play a role in sperm motility.

---

Note: This product is for in vitro research use only