

ARHGEF5 Antibody

Catalog No: #34996

Package Size: #34996-1 50ul #34996-2 100ul

Orders: order@signalwayantibody.comSupport: tech@signalwayantibody.com

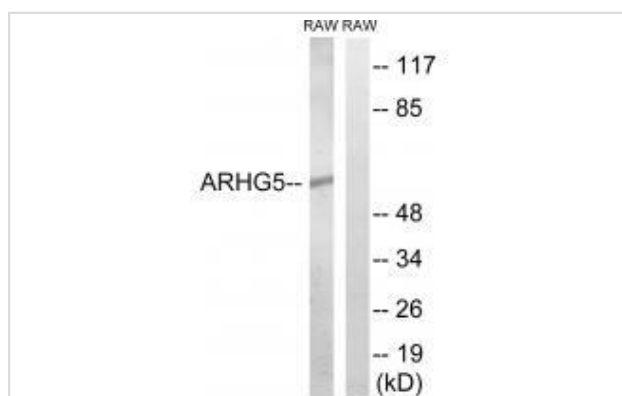
Description

Product Name	ARHGEF5 Antibody
Host Species	Rabbit
Clonality	Polyclonal
Purification	The antibody was affinity-purified from rabbit antiserum by affinity-chromatography using epitope-specific immunogen.
Applications	WB
Species Reactivity	Hu Ms
Specificity	The antibody detects endogenous levels of total ARHGEF5 protein.
Immunogen Type	Peptide
Immunogen Description	Synthesized peptide derived from internal of human ARHGEF5.
Target Name	ARHGEF5
Other Names	ARH5; guanine nucleotide regulatory protein TIM; Oncogene TIM; p60 TIM; Rho guanine nucleotide exchange factor 5
Accession No.	Swiss-Prot: Q12774NCBI Gene ID: 7984
Uniprot	Q12774
GeneID	7984;
SDS-PAGE MW	60kd
Concentration	1.0mg/ml
Formulation	Rabbit IgG in phosphate buffered saline (without Mg ²⁺ and Ca ²⁺), pH 7.4, 150mM NaCl, 0.02% sodium azide and 50% glycerol.
Storage	Store at -20°C

Application Details

Western blotting: 1:500~1:3000

Images



Western blot analysis of extracts from RAW264.7 cells, using ARHGEF5 antibody #34996.

Background

Rho GTPases play a fundamental role in numerous cellular processes initiated by extracellular stimuli that work through G protein coupled receptors. The encoded protein may form a complex with G proteins and stimulate Rho-dependent signals. This protein may be involved in the control of cytoskeletal organization.

Chan A.M.-L., Oncogene 9:1057-1063(1994).

Jikuya H., Submitted (APR-2004) to the EMBL/GenBank/DDBJ databases.

Hillier L.W., Nature 424:157-164(2003)

Note: This product is for in vitro research use only