

MRRF Antibody

Catalog No: #35003

Package Size: #35003-1 50ul #35003-2 100ul

Orders: order@signalwayantibody.comSupport: tech@signalwayantibody.com

Description

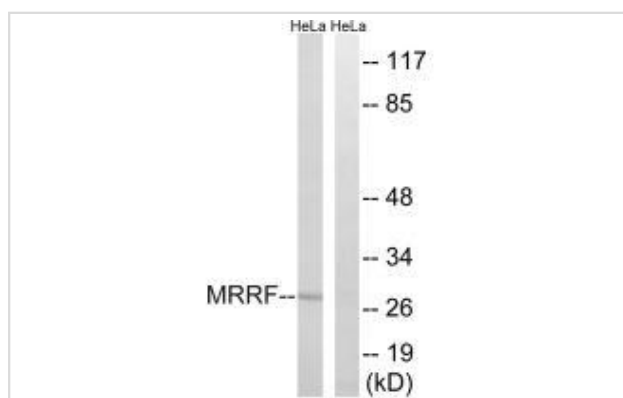
| | |
|-----------------------|--|
| Product Name | MRRF Antibody |
| Host Species | Rabbit |
| Clonality | Polyclonal |
| Purification | The antibody was affinity-purified from rabbit antiserum by affinity-chromatography using epitope-specific immunogen. |
| Applications | WB IHC |
| Species Reactivity | Hu |
| Specificity | The antibody detects endogenous levels of total MRRF protein. |
| Immunogen Type | Peptide |
| Immunogen Description | Synthesized peptide derived from internal of human MRRF. |
| Target Name | MRRF |
| Other Names | Ribosome-recycling factor; mitochondrial; RRF; Ribosome-releasing factor; mitochondrial |
| Accession No. | Swiss-Prot: Q96E11NCBI Gene ID: 92399 |
| Uniprot | Q96E11 |
| GeneID | 92399; |
| SDS-PAGE MW | 28kd |
| Concentration | 1.0mg/ml |
| Formulation | Rabbit IgG in phosphate buffered saline (without Mg ²⁺ and Ca ²⁺), pH 7.4, 150mM NaCl, 0.02% sodium azide and 50% glycerol. |
| Storage | Store at -20°C |

Application Details

Western blotting: 1:500~1:3000

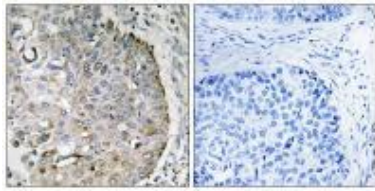
Immunohistochemistry: 1:50~1:100

Images



Western blot analysis of extracts from HeLa cells, using MRRF antibody #35003.

Immunohistochemistry analysis of paraffin-embedded human lung carcinoma tissue, using MRRF antibody #35003.



Background

Responsible for the release of ribosomes from messenger RNA at the termination of protein biosynthesis. May increase the efficiency of translation by recycling ribosomes from one round of translation to another By similarity.

Ota T., Nat. Genet. 36:40-45(2004).

Humphray S.J., Nature 429:369-374(2004).

Zhang Y., Biochim. Biophys. Acta 1443:245-250(1998).

Note: This product is for in vitro research use only