

RFWD3Antibody

Catalog No: #35004

Package Size: #35004-1 50ul #35004-2 100ul

Orders: order@signalwayantibody.comSupport: tech@signalwayantibody.com

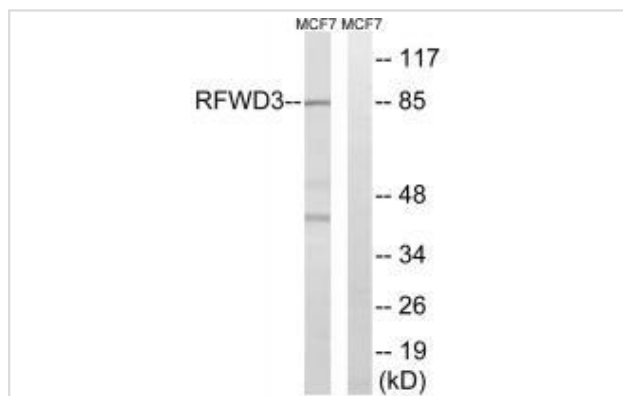
Description

Product Name	RFWD3Antibody
Host Species	Rabbit
Clonality	Polyclonal
Purification	The antibody was affinity-purified from rabbit antiserum by affinity-chromatography using epitope-specific immunogen.
Applications	WB
Species Reactivity	Hu
Specificity	The antibody detects endogenous levels of total RFWD3 protein.
Immunogen Type	Peptide
Immunogen Description	Synthesized peptide derived from internal of human RFWD3.
Target Name	RFWD3
Other Names	MLKL; ring finger and WD repeat domain 3; RING finger protein 201; RNF201;
Accession No.	Swiss-Prot: Q6PCD5NCBI Gene ID: 55159
Uniprot	Q6PCD5
GeneID	55159;
SDS-PAGE MW	85kd
Concentration	1.0mg/ml
Formulation	Rabbit IgG in phosphate buffered saline (without Mg ²⁺ and Ca ²⁺), pH 7.4, 150mM NaCl, 0.02% sodium azide and 50% glycerol.
Storage	Store at -20°C

Application Details

Western blotting: 1:500~1:3000

Images



Western blot analysis of extracts from MCF-7 cells, using RFWD3 antibody #35004.

Background

E3 ubiquitin-protein ligase that mediates the ubiquitination of p53/TP53 in the late response to DNA damage, and acts as a positive regulator of p53/TP53 stability, thereby regulating the G1/S DNA damage checkpoint. May act by catalyzing the formation of short polyubiquitin chains on p53/TP53 that are not targeted to the proteasome. In response to ionizing radiation, interacts with MDM2 and enhances p53/TP53 ubiquitination, possibly by restricting MDM2 from extending polyubiquitin chains on ubiquitinated p53/TP53. Plays a role in RPA-mediated DNA damage signaling and repair.

The MGC Project Team, Genome Res. 14:2121-2127(2004).

Ota T., Nat. Genet. 36:40-45(2004).

Matsuoka S., Science 316:1160-1166(2007).

Note: This product is for in vitro research use only