

DP-1 Antibody

Catalog No: #21654

Package Size: #21654-1 50ul #21654-2 100ul

Orders: order@signalwayantibody.comSupport: tech@signalwayantibody.com

Description

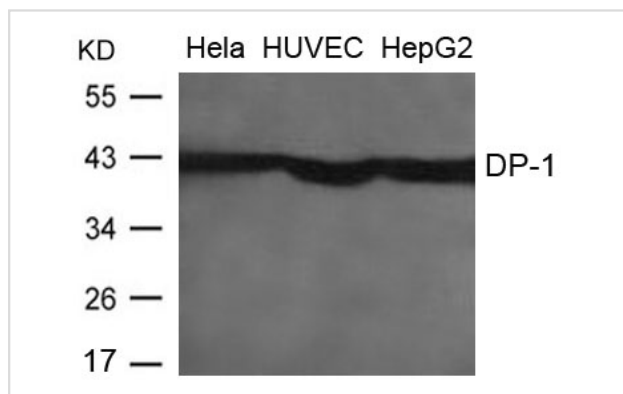
Product Name	DP-1 Antibody
Host Species	Rabbit
Clonality	Polyclonal
Purification	Antibodies were produced by immunizing rabbits with synthetic peptide and KLH conjugates. Antibodies were purified by affinity-chromatography using epitope-specific peptide.
Applications	WB
Species Reactivity	Hu Ms
Specificity	The antibody detects endogenous levels of total DP-1 protein.
Immunogen Type	Peptide-KLH
Immunogen Description	Peptide sequence around aa.13~17(E-L-K-V-F) derived from Human DP-1
Target Name	DP-1
Other Names	Dp-1; TFDP1; DRTF1
Accession No.	Swiss-Prot: Q14186NCBI Protein: NP_009042.1
Uniprot	Q14186
GeneID	7027;
Concentration	1.0mg/ml
Formulation	Supplied at 1.0mg/mL in phosphate buffered saline (without Mg ²⁺ and Ca ²⁺), pH 7.4, 150mM NaCl, 0.02% sodium azide and 50% glycerol.
Storage	Store at -20°C for long term preservation (recommended). Store at 4°C for short term use.

Application Details

Predicted MW: 45kd

Western blotting: 1:500~1:1000

Images



Western blot analysis of extracts from Hela, HUVEC and HepG2 cells using DP-1 Antibody #21654.

Background

Can stimulate E2F-dependent transcription. Binds DNA cooperatively with E2F family members through the E2 recognition site, 5'-TTTC[CG]CGC-3', found in the promoter region of a number of genes whose products are involved in cell cycle regulation or in DNA replication. The DP2/E2F complex functions in the control of cell-cycle progression from G1 to S phase. The E2F-1/DP complex appears to mediate both cell proliferation and apoptosis. Wu C.-L., Zukerberg L.R., Ngwu C., Harlow E., Lees J.A. Mol. Cell. Biol. 15:2536-2546(1995)

Note: This product is for in vitro research use only