

EWSR1 Antibody

Catalog No: #35008



Package Size: #35008-1 50ul #35008-2 100ul

Orders: order@signalwayantibody.com
Support: tech@signalwayantibody.com

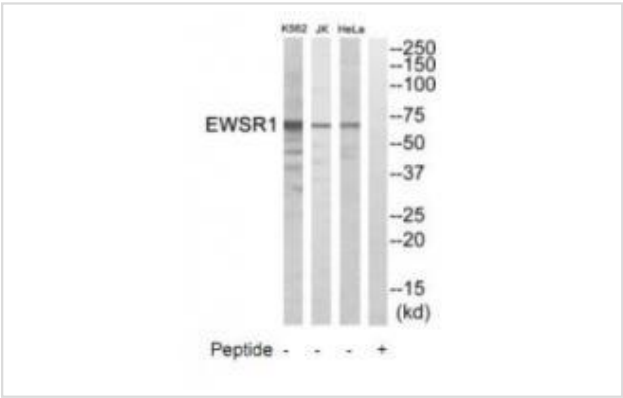
Description

Product Name	EWSR1 Antibody
Host Species	Rabbit
Clonality	Polyclonal
Purification	The antibody was affinity-purified from rabbit antiserum by affinity-chromatography using epitope-specific immunogen.
Applications	WB
Species Reactivity	Hu
Specificity	The antibody detects endogenous levels of total EWSR1 protein.
Immunogen Type	Peptide
Immunogen Description	Synthesized peptide derived from internal of human EWSR1.
Target Name	EWSR1
Other Names	EWS oncogene; Ewing sarcoma breakpoint region 1 protein;
Accession No.	Swiss-Prot: Q01844NCBI Gene ID: 2130
Uniprot	Q01844
GeneID	2130;
SDS-PAGE MW	68kd
Concentration	1.0mg/ml
Formulation	Rabbit IgG in phosphate buffered saline (without Mg2+ and Ca2+), pH 7.4, 150mM NaCl, 0.02% sodium azide and 50% glycerol.
Storage	Store at -20°C

Application Details

Western blotting: 1:500~1:3000

Images



Western blot analysis of extracts from HeLa cells, Jurkat cells and K562 cells, using EWSR1 antibody #35008.

Background

Might normally function as a transcriptional repressor. EWS-fusion-proteins (EFPS) may play a role in the tumorigenic process. They may disturb gene expression by mimicking, or interfering with the normal function of CTD-POLII within the transcription initiation complex. They may also contribute to an aberrant activation of the fusion protein target genes.

Delattre O., Nature 359:162-165(1992).

Plougastel B., Genomics 18:609-615(1993).

Zucman-Rossi J., Submitted (MAY-1998) to the EMBL/GenBank/DDBJ databases.

Note: This product is for in vitro research use only