

## SCFD1 Antibody

Catalog No: #35011

Package Size: #35011-1 50ul #35011-2 100ul

Orders: [order@signalwayantibody.com](mailto:order@signalwayantibody.com)Support: [tech@signalwayantibody.com](mailto:tech@signalwayantibody.com)

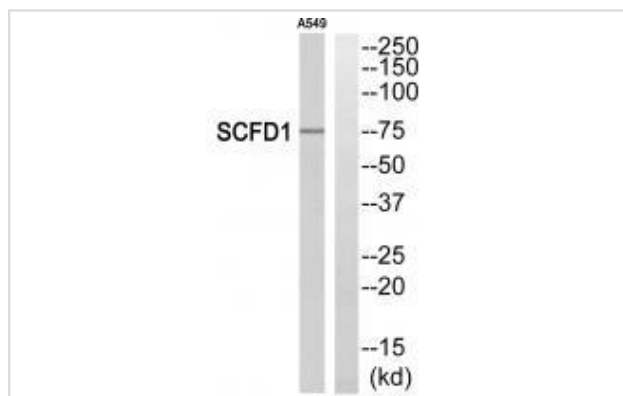
## Description

Product Name	SCFD1 Antibody
Host Species	Rabbit
Clonality	Polyclonal
Purification	The antibody was affinity-purified from rabbit antiserum by affinity-chromatography using epitope-specific immunogen.
Applications	WB
Species Reactivity	Hu
Specificity	The antibody detects endogenous levels of total SCFD1 protein.
Immunogen Type	Peptide
Immunogen Description	Synthesized peptide derived from C-terminal of human SCFD1.
Target Name	SCFD1
Other Names	Sec1 family domain-containing protein 1 Syntaxin-binding protein 1-like 2; Sly1p SCFD1;
Accession No.	Swiss-Prot: Q8WVM8NCBI Gene ID: 23256
Uniprot	Q8WVM8
GeneID	23256;
SDS-PAGE MW	75kd
Concentration	1.0mg/ml
Formulation	Rabbit IgG in phosphate buffered saline (without Mg <sup>2+</sup> and Ca <sup>2+</sup> ), pH 7.4, 150mM NaCl, 0.02% sodium azide and 50% glycerol.
Storage	Store at -20°C

## Application Details

Western blotting: 1:500~1:3000

## Images



Western blot analysis of extracts from A549 cells, using SCFD1 antibody #35011.

## Background

---

Plays a role in SNARE-pin assembly and Golgi-to-ER retrograde transport via its interaction with COG4. Involved in vesicular transport between the endoplasmic reticulum and the Golgi By similarity.

Nagase T., DNA Res. 5:355-364(1998).

Song H., Submitted (DEC-1998) to the EMBL/GenBank/DDBJ databases.

Wang Y.-G., Submitted (NOV-2000) to the EMBL/GenBank/DDBJ databases.

---

Note: This product is for in vitro research use only