

Dynamin 1 Antibody

Catalog No: #21653



Package Size: #21653-1 50ul #21653-2 100ul

Orders: order@signalwayantibody.com
Support: tech@signalwayantibody.com

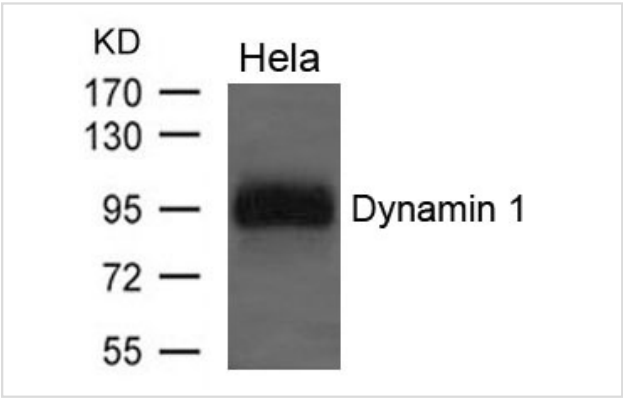
Description

Product Name	Dynamin 1 Antibody
Host Species	Rabbit
Clonality	Polyclonal
Purification	Antibodies were produced by immunizing rabbits with synthetic peptide and KLH conjugates. Antibodies were purified by affinity-chromatography using epitope-specific peptide.
Applications	WB
Species Reactivity	Hu Ms Rt
Specificity	The antibody detects endogenous levels of total Dynamin 1 protein.
Immunogen Type	Peptide-KLH
Immunogen Description	Peptide sequence around aa.774~778(S-P-T-S-S) derived from Human Dynamin 1
Target Name	Dynamin 1
Other Names	DNM
Accession No.	Swiss-Prot: Q05193NCBI Protein: NP_001005336.1
Uniprot	Q05193
GeneID	1759;
Concentration	1.0mg/ml
Formulation	Supplied at 1.0mg/mL in phosphate buffered saline (without Mg2+ and Ca2+), pH 7.4, 150mM NaCl, 0.02% sodium azide and 50% glycerol.
Storage	Store at -20°C for long term preservation (recommended). Store at 4°C for short term use.

Application Details

Predicted MW: 100kd
Western blotting: 1:500~1:1000

Images



Western blot analysis of extracts from HeLa cells using Dynamin 1 Antibody #21653.

Background

Microtubule-associated force-producing protein involved in producing microtubule bundles and able to bind and hydrolyze GTP. Most probably involved in vesicular trafficking processes. Involved in receptor-mediated endocytosis "SNX9 regulates dynamin assembly and is required for efficient clathrin-mediated endocytosis."

Soulet F., Yazar D., Leonard M., Schmid S.L.

Mol. Biol. Cell 16:2058-2067(2005)

Note: This product is for in vitro research use only