

PRKX Antibody

Catalog No: #35025

Package Size: #35025-1 50ul #35025-2 100ul

Orders: order@signalwayantibody.comSupport: tech@signalwayantibody.com

Description

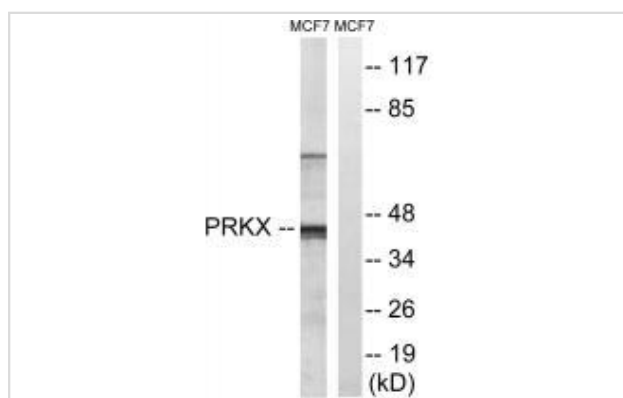
Product Name	PRKX Antibody
Host Species	Rabbit
Clonality	Polyclonal
Purification	The antibody was affinity-purified from rabbit antiserum by affinity-chromatography using epitope-specific immunogen.
Applications	WB IHC
Species Reactivity	Hu
Specificity	The antibody detects endogenous levels of total PRKX protein.
Immunogen Type	Peptide
Immunogen Description	Synthesized peptide derived from internal of human PRKX.
Target Name	PRKX
Other Names	EC 2.7.11.1; PKX1;
Accession No.	Swiss-Prot: P51817NCBI Gene ID: 5613
Uniprot	P51817
GeneID	5613;
SDS-PAGE MW	41kd
Concentration	1.0mg/ml
Formulation	Rabbit IgG in phosphate buffered saline (without Mg ²⁺ and Ca ²⁺), pH 7.4, 150mM NaCl, 0.02% sodium azide and 50% glycerol.
Storage	Store at -20°C

Application Details

Western blotting: 1:500~1:3000

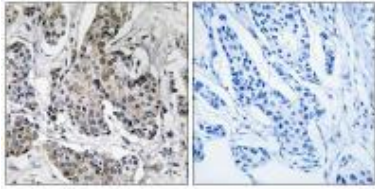
Immunohistochemistry: 1:50~1:100

Images



Western blot analysis of extracts from MCF-7 cells, using PRKX antibody #35025.

Immunohistochemistry analysis of paraffin-embedded human breast carcinoma tissue using PRKX antibody #35025.



Background

Serine/threonine protein kinase regulated by and mediating cAMP signaling in cells. Acts through phosphorylation of downstream targets that may include CREB, SMAD6 and PKD1 and has multiple functions in cellular differentiation and epithelial morphogenesis. Regulates myeloid cell differentiation through SMAD6 phosphorylation. Involved in nephrogenesis by stimulating renal epithelial cell migration and tubulogenesis. Also involved in angiogenesis through stimulation of endothelial cell proliferation, migration and vascular-like structure formation.

Klink A., Hum. Mol. Genet. 4:869-878(1995).

The MGC Project Team, Genome Res. 14:2121-2127(2004).

Note: This product is for in vitro research use only