

PRKY Antibody

Catalog No: #35026

Package Size: #35026-1 50ul #35026-2 100ul

Orders: order@signalwayantibody.comSupport: tech@signalwayantibody.com

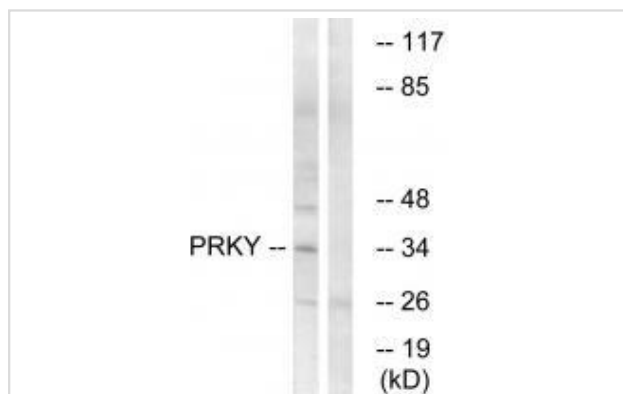
Description

Product Name	PRKY Antibody
Host Species	Rabbit
Clonality	Polyclonal
Purification	The antibody was affinity-purified from rabbit antiserum by affinity-chromatography using epitope-specific immunogen.
Applications	WB
Species Reactivity	Hu
Specificity	The antibody detects endogenous levels of total PRKY protein.
Immunogen Type	Peptide
Immunogen Description	Synthesized peptide derived from internal of human PRKY.
Target Name	PRKY
Other Names	EC 2.7.11.1; Serine/threonine-protein kinase PRKY;
Accession No.	Swiss-Prot: O43930NCBI Gene ID: 5616
Uniprot	O43930
GeneID	5616;
SDS-PAGE MW	34kd
Concentration	1.0mg/ml
Formulation	Rabbit IgG in phosphate buffered saline (without Mg ²⁺ and Ca ²⁺), pH 7.4, 150mM NaCl, 0.02% sodium azide and 50% glycerol.
Storage	Store at -20°C

Application Details

Western blotting: 1:500~1:3000

Images



Western blot analysis of extracts from Jurkat cells, using PRKY antibody #35026.

Background

This gene is similar to the protein kinase, X-linked gene in the pseudoautosomal region of the X chromosome. The gene is classified as a transcribed pseudogene because it has lost a coding exon that results in all transcripts being candidates for nonsense-mediated decay (NMD) and unlikely to express a protein. Abnormal recombination between this gene and a related gene on chromosome X is a frequent cause of XX males and XY females. Schiebel K., Hum. Mol. Genet. 6:1985-1989(1997).

The MGC Project Team; Genome Res. 14:2121-2127(2004).

Schiebel K., Cytogenet. Cell Genet. 76:49-52(1997).

Note: This product is for in vitro research use only