

RIOK3 Antibody

Catalog No: #35027

Package Size: #35027-1 50ul #35027-2 100ul

Orders: order@signalwayantibody.comSupport: tech@signalwayantibody.com

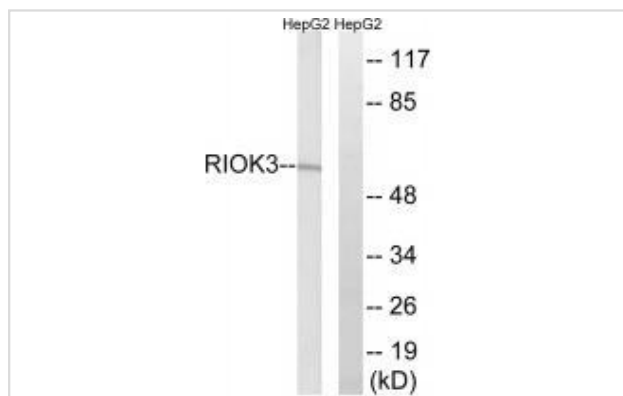
Description

Product Name	RIOK3 Antibody
Host Species	Rabbit
Clonality	Polyclonal
Purification	The antibody was affinity-purified from rabbit antiserum by affinity-chromatography using epitope-specific immunogen.
Applications	WB
Species Reactivity	Hu
Specificity	The antibody detects endogenous levels of total RIOK3 protein.
Immunogen Type	Peptide
Immunogen Description	Synthesized peptide derived from internal of human RIOK3.
Target Name	RIOK3
Other Names	EC 2.7.11.1; RIO kinase 3; sudD homolog;
Accession No.	Swiss-Prot: O14730NCBI Gene ID: 8780
Uniprot	O14730
GeneID	8780;
SDS-PAGE MW	59kd
Concentration	1.0mg/ml
Formulation	Rabbit IgG in phosphate buffered saline (without Mg ²⁺ and Ca ²⁺), pH 7.4, 150mM NaCl, 0.02% sodium azide and 50% glycerol.
Storage	Store at -20°C

Application Details

Western blotting: 1:500~1:3000

Images



Western blot analysis of extracts from HepG2 cells, using RIOK3 antibody #35027.

Background

This gene was identified by the similarity of its product to the *Aspergillus nidulans* Sudd protein, an extragenic suppressor of the heat-sensitive bimD6 mutation that fails to attach properly to the spindle microtubules at a restrictive temperature. The specific function of this gene has not yet been determined.

Anaya P., Gene 211:323-329(1998).

Nusbaum C., Nature 437:551-555(2005).

The MGC Project Team, Genome Res. 14:2121-2127(2004)

Note: This product is for in vitro research use only