

SHB Antibody

Catalog No: #35039

Package Size: #35039-1 50ul #35039-2 100ul

Orders: order@signalwayantibody.comSupport: tech@signalwayantibody.com

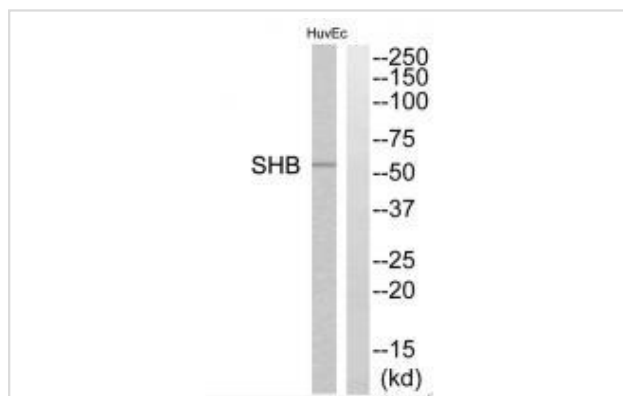
Description

Product Name	SHB Antibody
Host Species	Rabbit
Clonality	Polyclonal
Purification	The antibody was affinity-purified from rabbit antiserum by affinity-chromatography using epitope-specific immunogen.
Applications	WB
Species Reactivity	Hu
Specificity	The antibody detects endogenous levels of total SHB protein.
Immunogen Type	Peptide
Immunogen Description	Synthesized peptide derived from C-terminal of human SHB.
Target Name	SHB
Other Names	SH2 domain-containing adapter protein B; SHB;
Accession No.	Swiss-Prot: Q15464NCBI Gene ID: 6461
Uniprot	Q15464
GeneID	6461;
SDS-PAGE MW	55kd
Concentration	1.0mg/ml
Formulation	Rabbit IgG in phosphate buffered saline (without Mg ²⁺ and Ca ²⁺), pH 7.4, 150mM NaCl, 0.02% sodium azide and 50% glycerol.
Storage	Store at -20°C

Application Details

Western blotting: 1:500~1:3000

Images



Western blot analysis of extracts from HuvEc cells, using SHB antibody #35039.

Background

Adapter protein which regulates several signal transduction cascades by linking activated receptors to downstream signaling components. May play a role in angiogenesis by regulating FGFR1, VEGFR2 and PDGFR signaling. May also play a role in T-cell antigen receptor/TCR signaling, interleukin-2 signaling, apoptosis and neuronal cells differentiation by mediating basic-FGF and NGF-induced signaling cascades. May also regulate IRS1 and IRS2 signaling in insulin-producing cells.

Welsh M., *Oncogene* 9:19-27(1994).

Humphray S.J., *Nature* 429:369-374(2004).

Mural R.J., Submitted (SEP-2005) to the EMBL/GenBank/DDBJ databases.

Note: This product is for in vitro research use only