

# b-Enolase(ENO-3) Antibody

Catalog No: #21656

Package Size: #21656-1 50ul #21656-2 100ul

Orders: [order@signalwayantibody.com](mailto:order@signalwayantibody.com)Support: [tech@signalwayantibody.com](mailto:tech@signalwayantibody.com)

## Description

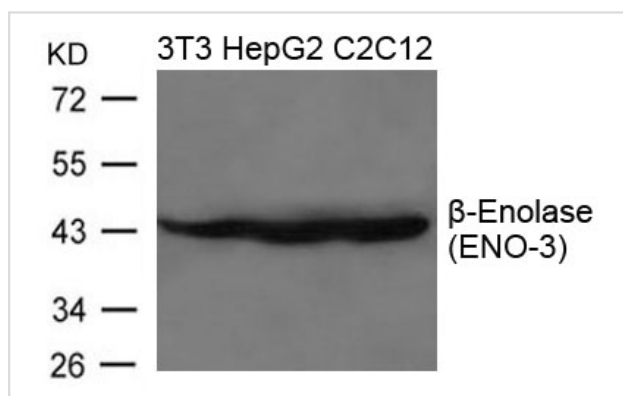
Product Name	b-Enolase(ENO-3) Antibody
Host Species	Rabbit
Clonality	Polyclonal
Purification	Antibodies were produced by immunizing rabbits with synthetic peptide and KLH conjugates. Antibodies were purified by affinity-chromatography using epitope-specific peptide.
Applications	WB
Species Reactivity	Hu Ms
Specificity	The antibody detects endogenous level of total b-Enolase(ENO-3) protein.
Immunogen Type	Peptide-KLH
Immunogen Description	Peptide sequence around aa.49~53(L-R-D-G-D) derived from Human b-Enolase(ENO-3).
Target Name	b-Enolase(ENO-3)
Other Names	MSE; GSD13;
Accession No.	Swiss-Prot: P13929NCBI Protein: NP_001967.3
Uniprot	P13929
GeneID	2027;
Concentration	1.0mg/ml
Formulation	Supplied at 1.0mg/mL in phosphate buffered saline (without Mg <sup>2+</sup> and Ca <sup>2+</sup> ), pH 7.4, 150mM NaCl, 0.02% sodium azide and 50% glycerol.
Storage	Store at -20°C for long term preservation (recommended). Store at 4°C for short term use.

## Application Details

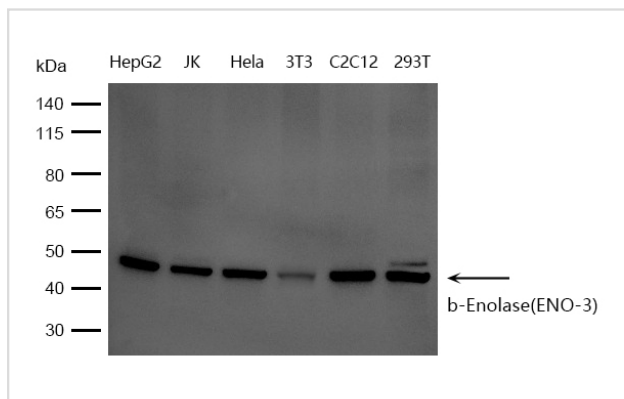
Predicted MW: 45kd

Western blotting: 1:500~1:1000

## Images



Western blot analysis of extracts from 3T3, HepG2 and C2C12 cells using b-Enolase(ENO-3) Antibody #21656.



Western blot analysis of extracts from HepG2oO JKoO HeLa,3T3, C2C12 and 293T cells using b-Enolase(ENO-3) Antibody

## Background

Appears to have a function in striated muscle development and regeneration.

Note: This product is for in vitro research use only