

SCN4A Antibody

Catalog No: #35054

Package Size: #35054-1 50ul #35054-2 100ul

Orders: order@signalwayantibody.com

Support: tech@signalwayantibody.com

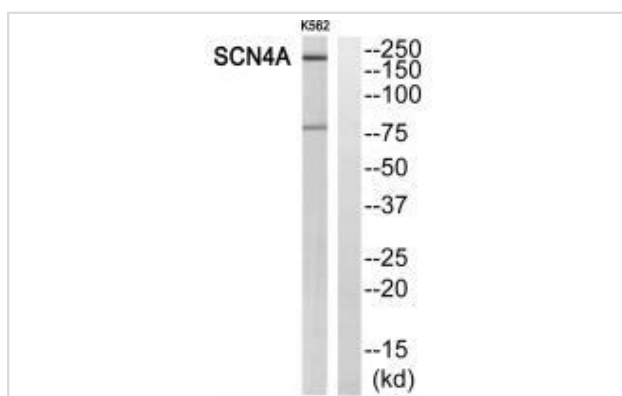
Description

Product Name	SCN4A Antibody
Host Species	Rabbit
Clonality	Polyclonal
Purification	The antibody was affinity-purified from rabbit antiserum by affinity-chromatography using epitope-specific immunogen.
Applications	WB
Species Reactivity	Hu
Specificity	The antibody detects endogenous levels of total SCN4A protein.
Immunogen Type	Peptide
Immunogen Description	Synthesized peptide derived from internal of human SCN4A.
Target Name	SCN4A
Other Names	Sodium channel protein type 4 subunit alpha; Sodium channel protein type IV subunit alpha; Voltage-gated sodium channel subunit alpha Nav1.4; Sodium channel protein skeletal muscle subunit alpha; SkM1
Accession No.	Swiss-Prot: P35499NCBI Gene ID: 6329
Uniprot	P35499
GeneID	6329;
SDS-PAGE MW	208kd
Concentration	1.0mg/ml
Formulation	Rabbit IgG in phosphate buffered saline (without Mg ²⁺ and Ca ²⁺), pH 7.4, 150mM NaCl, 0.02% sodium azide and 50% glycerol.
Storage	Store at -20°C

Application Details

Western blotting: 1:500~1:3000

Images



Western blot analysis of extracts from K562 cells, using SCN4A antibody #35054.

Background

This protein mediates the voltage-dependent sodium ion permeability of excitable membranes. Assuming opened or closed conformations in response to the voltage difference across the membrane, the protein forms a sodium-selective channel through which Na⁺ ions may pass in accordance with their electrochemical gradient. This sodium channel may be present in both denervated and innervated skeletal muscle.

George A.L. Jr., *Ann. Neurol.* 31:131-137(1992).

Wang J., *Biochem. Biophys. Res. Commun.* 182:794-801(1992).

Tsujino A., *Proc. Natl. Acad. Sci. U.S.A.* 100:7377-7382(2003).

Note: This product is for in vitro research use only