

GFI1b Antibody

Catalog No: #21664

Package Size: #21664-1 50ul #21664-2 100ul

Orders: order@signalwayantibody.comSupport: tech@signalwayantibody.com

Description

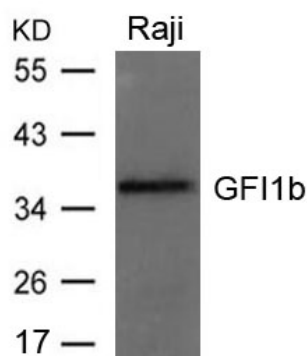
| | |
|-----------------------|---|
| Product Name | GFI1b Antibody |
| Host Species | Rabbit |
| Clonality | Polyclonal |
| Purification | Antibodies were produced by immunizing rabbits with synthetic peptide and KLH conjugates. Antibodies were purified by affinity-chromatography using epitope-specific peptide. |
| Applications | WB |
| Species Reactivity | Hu Ms Rt |
| Specificity | The antibody detects endogenous level of total GFI1b protein. |
| Immunogen Type | Peptide-KLH |
| Immunogen Description | Peptide sequence around aa.322~326(H-R-E-S-Q) derived from Human GFI1b. |
| Target Name | GFI1b |
| Other Names | Gfi-1b |
| Accession No. | Swiss-Prot: Q5VTD9NCBI Protein: NP_001128503.1 |
| Uniprot | Q5VTD9 |
| GeneID | 8328; |
| Concentration | 1.0mg/ml |
| Formulation | Supplied at 1.0mg/mL in phosphate buffered saline (without Mg ²⁺ and Ca ²⁺), pH 7.4, 150mM NaCl, 0.02% sodium azide and 50% glycerol. |
| Storage | Store at -20°C for long term preservation (recommended). Store at 4°C for short term use. |

Application Details

Predicted MW: 38kd

Western blotting: 1:500~1:1000

Images



Western blot analysis of extracts from Raji cells using GFI1b Antibody #21664.

Background

Essential proto-oncogenic transcriptional regulator necessary for development and differentiation of erythroid and megakaryocytic lineages. Transcriptional repressor or activator depending on both promoter and cell type context; represses promoter activity of SOCS1 and SOCS3 and thus, may regulate cytokine signaling pathways. Cooperates with GATA1 to repress target gene transcription, such as the apoptosis regulator BCL2L1; GFI1B silencing in leukemic cell lines markedly increase apoptosis rate. Inhibits down-regulation of MYC and MYB as well as the cyclin-dependent kinase inhibitor CDKN1A/P21WAF1 in IL6-treated myelomonocytic cells. Represses expression of GATA3 in T-cell lymphomas and inhibits GATA1-mediated transcription; as GATA1 also mediates erythroid GFI1B transcription, both GATA1 and GFI1B participate in a feedback regulatory pathway controlling the expression of GFI1B gene in erythroid cells. Suppresses GATA1-mediated stimulation of GFI1B promoter through protein interaction. Binds to gamma-satellite DNA and to its own promoter, auto-repressing its own expression. Alters histone methylation by recruiting histone methyltransferase to target genes promoters. Plays a role in heterochromatin formation.

Osawa M., Yamaguchi T., Nakamura Y. Iwama A. Blood 100:2769-2777(2002)

Huang D.-Y., Kuo Y.-Y., Chang Z.-F. Nucleic Acids Res. 33:5331-5342(2005)

Vassen L., Fiolka K., Moeroney T. EMBO J. 25:2409-2419(2006)

Note: This product is for in vitro research use only