

## SCN2B Antibody

Catalog No: #35057

Package Size: #35057-1 50ul #35057-2 100ul

Orders: [order@signalwayantibody.com](mailto:order@signalwayantibody.com)Support: [tech@signalwayantibody.com](mailto:tech@signalwayantibody.com)

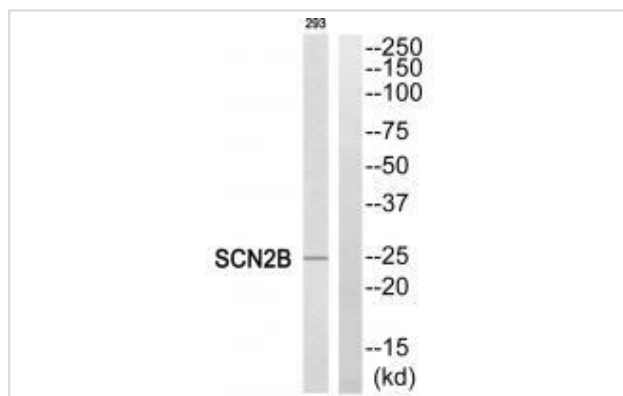
## Description

Product Name	SCN2B Antibody
Host Species	Rabbit
Clonality	Polyclonal
Purification	The antibody was affinity-purified from rabbit antiserum by affinity-chromatography using epitope-specific immunogen.
Applications	WB
Species Reactivity	Hu
Specificity	The antibody detects endogenous levels of total SCN2B protein.
Immunogen Type	Peptide
Immunogen Description	Synthesized peptide derived from internal of human SCN2B.
Target Name	SCN2B
Other Names	Sodium channel subunit beta-2; SCN2B;
Accession No.	Swiss-Prot: O60939NCBI Gene ID: 6327
Uniprot	O60939
GeneID	6327;
SDS-PAGE MW	24kd
Concentration	1.0mg/ml
Formulation	Rabbit IgG in phosphate buffered saline (without Mg <sup>2+</sup> and Ca <sup>2+</sup> ), pH 7.4, 150mM NaCl, 0.02% sodium azide and 50% glycerol.
Storage	Store at -20°C

## Application Details

Western blotting: 1:500~1:3000

## Images



Western blot analysis of extracts from 293 cells, using SCN2B antibody #35057.

## Background

---

Crucial in the assembly, expression, and functional modulation of the heterotrimeric complex of the sodium channel. The subunit beta-2 causes an increase in the plasma membrane surface area and in its folding into microvilli. Interacts with TNR may play a crucial role in clustering and regulation of activity of sodium channels at nodes of Ranvier By similarity.

Eubanks J., NeuroReport 8:2775-2779(1997).

Bolino A., Eur. J. Hum. Genet. 6:629-634(1998).

Cruz J.S., Science 284:711-711(1999).

---

Note: This product is for in vitro research use only