

## SFRS7 Antibody

Catalog No: #35076

Package Size: #35076-1 50ul #35076-2 100ul

Orders: [order@signalwayantibody.com](mailto:order@signalwayantibody.com)Support: [tech@signalwayantibody.com](mailto:tech@signalwayantibody.com)

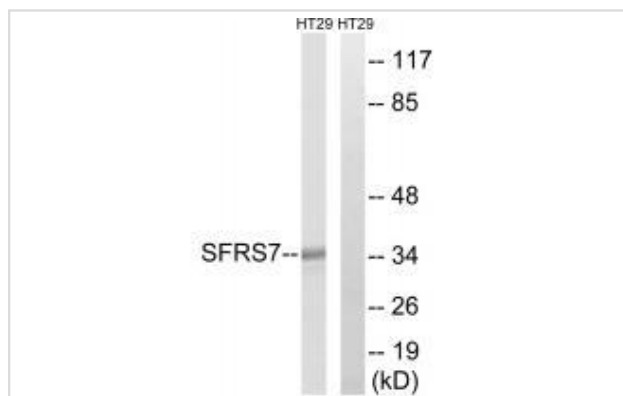
## Description

Product Name	SFRS7 Antibody
Host Species	Rabbit
Clonality	Polyclonal
Purification	The antibody was affinity-purified from rabbit antiserum by affinity-chromatography using epitope-specific immunogen.
Applications	WB
Species Reactivity	Hu
Specificity	The antibody detects endogenous levels of total SFRS7 protein.
Immunogen Type	Peptide
Immunogen Description	Synthesized peptide derived from internal of human SFRS7.
Target Name	SFRS7
Other Names	SFR7; Splicing factor 9G8; Splicing factor; arginine/serine-rich 7;
Accession No.	Swiss-Prot: Q16629NCBI Gene ID: 6432
Uniprot	Q16629
GeneID	6432;
SDS-PAGE MW	35kd
Concentration	1.0mg/ml
Formulation	Rabbit IgG in phosphate buffered saline (without Mg <sup>2+</sup> and Ca <sup>2+</sup> ), pH 7.4, 150mM NaCl, 0.02% sodium azide and 50% glycerol.
Storage	Store at -20°C

## Application Details

Western blotting: 1:500~1:3000

## Images



Western blot analysis of extracts from HT-29 cells, using SFRS7 antibody #35076.

## Background

---

Required for pre-mRNA splicing. Can also modulate alternative splicing in vitro. Represses the splicing of MAPT/Tau exon 10. May function as export adapter involved in mRNA nuclear export such as of histone H2A. Binds mRNA which is thought to be transferred to the NXF1-NXT1 heterodimer for export (TAP/NXF1 pathway); enhances NXF1-NXT1 RNA-binding activity. RNA-binding is semi-sequence specific.

Cavaloc Y., EMBO J. 13:2639-2649(1994).

Popielarz M., J. Biol. Chem. 270:17830-17835(1995).

The MGC Project Team, Genome Res. 14:2121-2127(2004).

---

Note: This product is for in vitro research use only