

TCF7L1 Antibody

Catalog No: #35103

Package Size: #35103-1 50ul #35103-2 100ul

Orders: order@signalwayantibody.comSupport: tech@signalwayantibody.com

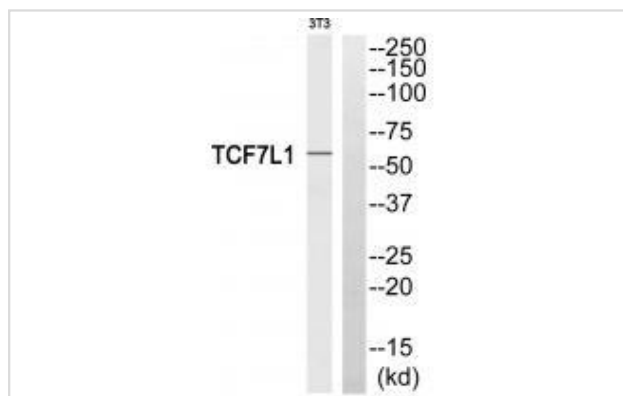
Description

Product Name	TCF7L1 Antibody
Host Species	Rabbit
Clonality	Polyclonal
Purification	The antibody was affinity-purified from rabbit antiserum by affinity-chromatography using epitope-specific immunogen.
Applications	WB
Species Reactivity	Hu Ms
Specificity	The antibody detects endogenous levels of total TCF7L1 protein.
Immunogen Type	Peptide
Immunogen Description	Synthesized peptide derived from internal of human TCF7L1.
Target Name	TCF7L1
Other Names	Transcription factor 7-like 1; HMG box transcription factor 3; TCF-3; TCF7L1; TCF3
Accession No.	Swiss-Prot: Q9HCS4NCBI Gene ID: 83439
Uniprot	Q9HCS4
GeneID	83439;
SDS-PAGE MW	63kd
Concentration	1.0mg/ml
Formulation	Rabbit IgG in phosphate buffered saline (without Mg ²⁺ and Ca ²⁺), pH 7.4, 150mM NaCl, 0.02% sodium azide and 50% glycerol.
Storage	Store at -20°C

Application Details

Western blotting: 1:500~1:3000

Images



Western blot analysis of extracts from 3T3 cells, using TCF7L1 antibody #35103.

Background

Participates in the Wnt signaling pathway. Binds to DNA and acts as a repressor in the absence of CTNNB1, and as an activator in its presence.

Necessary for the terminal differentiation of epidermal cells, the formation of keratohyalin granules and the development of the barrier function of the epidermis By similarity. Down-regulates NQO1, leading to increased mitomycin c resistance.

Sagara N., Cancer Res. 60:5959-5962(2000).

Hillier L.W., Nature 434:724-731(2005).

Castrop J., Nucleic Acids Res. 20:611-611(1992).

Note: This product is for in vitro research use only