

THOC5 Antibody

Catalog No: #35135

Package Size: #35135-1 50ul #35135-2 100ul

Orders: order@signalwayantibody.comSupport: tech@signalwayantibody.com

Description

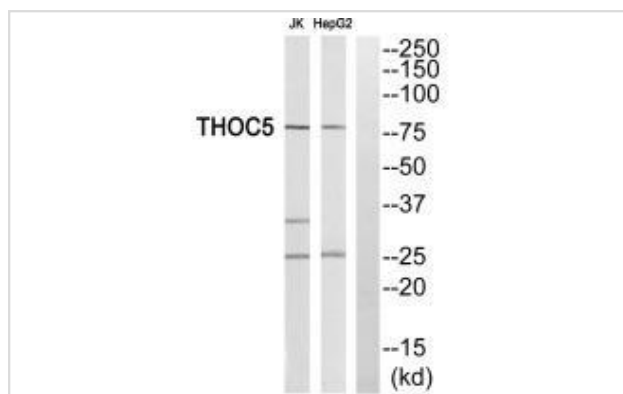
Product Name	THOC5 Antibody
Host Species	Rabbit
Clonality	Polyclonal
Purification	The antibody was affinity-purified from rabbit antiserum by affinity-chromatography using epitope-specific immunogen.
Applications	WB IHC
Species Reactivity	Hu
Specificity	The antibody detects endogenous levels of total THOC5 protein.
Immunogen Type	Peptide
Immunogen Description	Synthesized peptide derived from internal of human THOC5.
Target Name	THOC5
Other Names	THO complex subunit 5 homolog; NF2/meningioma region protein pK1.3; Placental protein 39.2; THOC5; C22orf19
Accession No.	Swiss-Prot: Q13769NCBI Gene ID: 8563
Uniprot	Q13769
GeneID	8563;
SDS-PAGE MW	78kd
Concentration	1.0mg/ml
Formulation	Rabbit IgG in phosphate buffered saline (without Mg ²⁺ and Ca ²⁺), pH 7.4, 150mM NaCl, 0.02% sodium azide and 50% glycerol.
Storage	Store at -20°C

Application Details

Western blotting: 1:500~1:3000

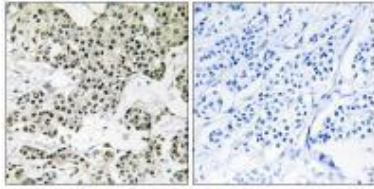
Immunohistochemistry: 1:50~1:100

Images



Western blot analysis of extracts from JK cells and HepG2 cells, using THOC5 antibody #35135.

Immunohistochemistry analysis of paraffin-embedded human breast carcinoma tissue using THOC5 antibody #35135.



Background

Acts as component of the THO subcomplex of the TREX complex which is thought to couple mRNA transcription, processing and nuclear export, and which specifically associates with spliced mRNA and not with unspliced pre-mRNA. TREX is recruited to spliced mRNAs by a transcription-independent mechanism, binds to mRNA upstream of the exon-junction complex (EJC) and is recruited in a splicing- and cap-dependent manner to a region near the 5' end of the mRNA where it functions in mRNA export to the cytoplasm via the TAP/NFX1 pathway. The TREX complex is essential for the export of Kaposi's sarcoma-associated herpesvirus (KSHV) intronless mRNAs and infectious virus production. THOC5 in conjunction with ALYREF/THOC4 functions in NXF1-NXT1 mediated nuclear export of HSP70 mRNA; both proteins enhance the RNA binding activity of NXF1 and are required for NXF1 localization to the nuclear rim. Involved in transcription elongation and genome stability. Involved in alternative polyadenylation site choice by recruiting CPSF6 to 5' region of target genes; probaly mediates association of the TREX and CFIm complexes. Regulates the expression of myeloid transcription factors CEBPA, CEBPB and GAB2 by enhancing the levels of phosphatidylinositol 3,4,5-trisphosphate. May be involved in the differentiation of granulocytes and adipocytes. Essential for hematopoietic primitive cell survival and plays an integral role in monocytic development.

Xie Y.G., Hum. Mol. Genet. 2:1361-1368(1993).

Nagase T., DNA Res. 6:63-70(1999).

Collins J.E., Genome Biol. 5:RESEARCH84.1-RESEARCH84.11(2004)

Note: This product is for in vitro research use only